

Central Bedfordshire  
Council  
Priory House  
Monks Walk  
Chicksands,  
Shefford SG17 5TQ



**please ask for** Sandra Hobbs  
**direct line** 0300 300 5257  
**date** 25 September 2009

## NOTICE OF MEETING

### CHILDREN, FAMILIES & LEARNING OVERVIEW & SCRUTINY COMMITTEE

Date & Time

**Tuesday, 6 October 2009 10.00 a.m.**

Venue at

**Room 15, Priory House, Monks Walk, Shefford**

Jaki Salisbury  
**Interim Chief Executive**

To: The Chairman and Members of the CHILDREN, FAMILIES & LEARNING  
OVERVIEW & SCRUTINY COMMITTEE:

Cllrs J Street (Chairman), Mrs D B Gurney (Vice-Chairman), P A Blaine,  
D Bowater, N B Costin, I Dalgarno, Dr R Egan, P Hollick, K Janes and  
A Shadbolt

[Named Substitutes:

Cllrs: Mrs A Barker, Mrs S Goodchild and Mrs M Mustoe]

Co-optees: Ms Chapman (Parent Governor), Ms Image (Roman Catholic Diocese),  
Mr Landman (Parent Governor), Mr Reynolds (Church of England Diocese) and Mr  
Sear (Parent Governor)

All other Members of the Council - on request

**MEMBERS OF THE PRESS AND PUBLIC ARE WELCOME TO ATTEND THIS  
MEETING**

# AGENDA

1. **APOLOGIES FOR ABSENCE**

Apologies for absence and notification of substitute members.

2. **MINUTES**

To approve as a correct record the minutes of the last meeting held on 11 August 2009.

3. **MEMBERS' INTERESTS**

To receive from Members declarations and the **nature** in relation to:-

- (a) personal interests in any agenda item
- (b) personal and prejudicial interests in any agenda item
- (c) any political whip in relation to any agenda item.

4. **CHAIRMAN'S ANNOUNCEMENTS AND COMMUNICATIONS**

To receive any announcements from the Chairman and any matters of communication.

5. **PETITIONS**

To receive petitions from members of the public in accordance with the Public Participation Procedure as set out in Annex 2 of Part A4 of the Constitution.

6. **QUESTIONS, STATEMENTS OR DEPUTATIONS**

To receive any questions, statements or deputations from members of the public in accordance with the Public Participation Procedure as set out in Annex 1 of part A4 of the Constitution.

7. **CALL-IN**

To consider any matter referred to the Committee for a decision in relation to call-in of a decision.

8. **REQUESTED ITEMS**

To consider any items referred to the Committee at the request of a Member under Procedure Rule 3.1 of Part D2 of the Constitution.

<b>REPORTS</b>
----------------

<b>Item</b>	<b>Subject</b>	<b>Page Nos.</b>
9	<b>JOINT STRATEGIC NEEDS ASSESSMENT - PROGRESS REPORT</b>  To update Members on progress made in developing the Joint Strategic Needs Analysis (JSNA) as it relates to Children and Young People living in Central Bedfordshire.	27 - 58
10	<b>STRATEGIC COMMISSIONING FRAMEWORK FOR CHILDREN IN CENTRAL BEDFORDSHIRE</b>  To provide Committee Members with the opportunity to comment on the draft commissioning framework which will guide the work of the Children's Trust.	59 - 76
11	<b>MONITORING QUARTERLY PERFORMANCE</b>  To provide Members with performance information in relation to Children, Families and Learning so that the Committee can take a view on what performance information they would like to scrutinise on a quarterly basis.	77 - 100
12	<b>WORK PROGRAMME 2009-2010</b>  To provide Members with their current work programme to consider any amendments that they may wish to make.	101 - 114

This page is intentionally left blank

**CENTRAL BEDFORDSHIRE COUNCIL**

At a meeting of the **CHILDREN, FAMILIES & LEARNING OVERVIEW & SCRUTINY COMMITTEE** held at Committee Room 1, The Council Offices, High Street North, Dunstable, Beds, LU6 1LF on Tuesday, 11 August 2009

**PRESENT**

Cllr J Street (Chairman)  
Cllr Mrs D B Gurney (Vice-Chairman)

Councillors: P A Blaine  
D Bowater  
N B Costin  
I Dalgarno  
R Egan  
K Janes  
P Hollick  
A Shadbolt

Parental Co-optees: D Landman  
B Sear

Roman Catholic  
Co-optee: Ms F Image

Apologies for Absence: Ms H Chapman  
J Reynolds

Members in Attendance: Cllrs J G Jamieson  
Mrs A M Lewis  
S F Male  
Mrs C Turner

Officers in Attendance: Mr B Carter – Overview & Scrutiny Manager  
Mrs E Grant – Deputy Chief Executive/ Director of  
Children, Families and Learning  
Mrs S Hobbs – Democratic Services Officer  
Mr J Partridge – Overview & Scrutiny Officer  
Ms K Peddie – Head of Policy & Strategy -  
Children, Families & Learning  
Mr R Waterfield – Assistant Director Community &  
Cultural Learning

CFL/09/12 **Minutes**

Members noted that the minutes had been revised as Councillors Egan and Hollick and Katherine Peddie had not been included as present at the last meeting. Councillor Shadbolt advised that he should be recorded as being present at the last meeting. It was also noted that Patrick Shevlin's job title had been incorrectly recorded and should be amended to read Assistant Director Learning and School Support.

Doug Landman advised that he should be included on the list of names as having a personal interest as he was a school governor.

A query was raised regarding the former Bedfordshire County Council (BCC) reaching wave 2 in the bid for Building Schools for the Future (BSF). Members were advised that BCC had achieved wave 2. Bedford Borough Council had achieved wave 6.

***RESOLVED to approve the Minutes of the meeting of the Children, Families and Learning Overview and Scrutiny held on 14 July 2009 as a correct record and to authorise the Chairman to sign them, subject to the above amendments.***

CFL/09/13 **Members' Interests**

(a) **Personal Interests:-**

None.

(b) **Personal and Prejudicial Interests:-**

None.

(c) **Any Political Whip in relation to items on the agenda:-**

None.

CFL/09/14 **Chairman's Announcements and Communications**

The Chairman had no announcements or communications to make.

CFL/09/15 **Petitions**

The Chairman announced that no petitions had been referred to this meeting.

CFL/09/16 **Questions, Statements or Deputations**

There were no applications from members of the public to speak under the Public Participation Procedure allowed for under Part A4 of the Constitution.

CFL/09/17 **Call-In**

No matters were referred to the Committee for consideration at the request of a Member under Procedure Rule 3.1 of Part D2 of the Constitution.

CFL/09/18 **Requested Items**

No items were referred to the Committee for consideration at the request of a Member under Procedure Rule 3.1 of Part D2 of the Constitution.

CFL/09/19 **Priorities for the Children and Young People's Plan for Central Bedfordshire**

Members received a report that set out the work that had been done to develop a Children and Young People's Plan (CYPP) for Central Bedfordshire and the priorities that had emerged following consultation with children, young people, families and the Council's partners. A supplementary report was circulated at the meeting which set out proposals on how the committee might wish to approach the scrutiny of the five key areas of the CYPP.

It was expected that local authorities put in place a Children's Trust by the end of 2008 which involved partners working together to develop a CYPP. The Plan would be in place for eighteen months so that the emerging guidance and legislation expected from Government in 2010 could inform the new Plan that had to be published in 2011. On 9 April the Central Bedfordshire Children and Young People's Trust Board held its first meeting and agreed working arrangements for the Children's Trust Board, a Commissioning Executive and five Every Child Matters Delivery Groups:

- Be Healthy
- Make a Positive Contribution
- Enjoy and Achieve
- Economic Wellbeing
- Stay Safe

The CYPP would set out the Government's aim that would make this the best place in the world to grow up and this would be the aim for the local authority as a corporate parent. By having the CYPP in place it would enable partners to be called to account for the benefit of children. The Every Child Matters Delivery Group leads held a series of workshops with partners and a list of 20 priorities emerged. Members were advised that stakeholders, children and young people were consulted on these priorities and had played a significant part in developing the Plan. Although some Members felt that the consultation process had not adequately involved children and young people in the poorest areas of Central Bedfordshire. Members were advised that all schools and youth centres had been approached to participate in the consultation.

The Committee noted that there was still work to be undertaken on the CYPP in relation to setting school improvement targets and identifying joint resources.

The Committee's response would be presented to the Children's Trust Board on 3 September 2009 and then the Plan would be submitted to the Executive on 15 September 2009 and approved by Council on 24 September 2009. Members would then have the opportunity to scrutinise the Plan over the following twelve months when the Plan was due to be refreshed. Members were disappointed that they had not had time to scrutinise the Plan in detail before it was adopted and there was also concern that there would not be adequate opportunities to amend priorities or targets throughout the year.

Members noted that many of these areas would be cross cutting, but they agreed that starting from January 2010 the Committee would scrutinise the following areas:

- 5 January 2010 – Enjoy and Achieve
- 2 February 2010 – Achieve Economic Wellbeing
- 30 March 2010 – Make a Positive Contribution
- 27 April 2010 – Stay Safe
- 25 May 2010 – Be Healthy

Members made the following comments:

- the foreword in the Plan did not emphasise that it was not a shared vision developed in partnership with the Children's Trust. The Plan needed more emphasis on it being a partnership approach and not solely the property of Central Bedfordshire Council. Members were advised that partners were going to be approached to include their logos on the Plan and it was being suggested that the foreword be signed by all the partners;
- the Plan contained too much jargon, which needed to be removed if it was to be used as a public document;
- the targets set out in the Plan did not appear to stretch the statutory partners to drive improvement in the areas defined as a priority. Members felt that statutory partners, such as the Police and the Primary Care Trust, needed to develop challenging measures of success that would encourage greater levels of improvement;
- that it was not clear how the strategic actions would be measured or what they would look like. The Plan should set out which lead partner would be responsible for achieving the individual targets so that they could be held to account. Members were advised that the five Every Child Matters Delivery Groups had action plans where the agencies had been named against the appropriate targets;



- statutory education indicators had been included in the body of the CYPP but were not evident within the Local Area Agreement indicators. Members agreed that it would be appropriate to recommend to the Local Strategic Partnership that the Local Area Agreement indicators should make reference to the statutory education indicators and the importance of a partnership approach towards their achievement;
- Members agreed that the provision of good housing was key as a means of achieving many of the targets set out in the plan as this would contribute to achieving the economic well-being targets;
- priority 4 in the CYPP needed to emphasise the importance of providing more opportunities for children and young people to keep fit;
- priority 5 in the CYPP needed to emphasise the importance of short-break services and provision made available by the Council in respect of respite and palliative care. There needed to be more targets contained within this priority detailing what success in transforming services for disabled children would look like. It was agreed that Councillor Gurney would feedback on the provision of palliative care as she was on the board for Keech Cottage hospice;
- Members also agreed that there should be early intervention where children were struggling to enable better outcomes for children and young people;
- Members were concerned that there was not enough facilities for children outside of school e.g. youth clubs. The CYPP should emphasise the importance of schools providing access to facilities out of hours for community use. Members were advised that Ofsted inspections from September would require schools to demonstrate how they were linked to the local community and this could be a means of enhancing community cohesion;
- providing such facilities as youth clubs would contribute to priority 12 as a means of reducing anti-social behaviour; and
- priority 14 in the CYPP referred to developing and promoting play, leisure, sport and cultural opportunities for children and young people age 8-13, but members felt that the age range should be widened.

Members were keen that during future discussion on the Plan that the Police Authority be involved with the possibility of inviting them along to Task Force meetings.

Members noted that the priorities contained in the report did not match those detailed in the CYPP and requested that Officers review the priorities in the plan to ensure that each of the priorities detailed in the report were included.

**RESOLVED**

- 1) ***that the Overview and Scrutiny Officer, in consultation with the Chairman, be delegated authority to provide a response to the Children's Trust and feedback to the Executive on the contents of the CYPP***
- 2) ***that the timetable for scrutinising the five delivery areas of the CYPP be agreed***
- 3) ***that the work programme of the Children, Families and Learning Overview and Scrutiny Committee be amended to reflect the work to be undertaken by the Committee in respect of the CYPP.***

CFL/09/20

**Consultation on the Future of Special Schools in the East of Central Bedfordshire**

Members considered a report that outlined the options for the future of special schools in the east of Central Bedfordshire in the light of the recommendations of the Special Educational Needs (SEN) Review, and the decision made by the Executive on 23 June 2009 to move forward to the first stage of consultation.

Members were advised that Hitchmead School, which provided for children with moderate learning difficulties aged 7 – 16 was likely to have around 41 pupils on roll for September 2009. Sunnyside School accommodated for children aged 3 – 19 with severe and profound and multiple learning difficulties and currently had more children on roll than the building was able to accommodate, with requests for placements increasing.

Members were advised that there were five possible options, but the consultation would allow for any other option to be submitted for consideration by the Executive. The five options were:

- Option A: the merger of Hitchmead School and Sunnyside School to provide one Area Special School utilising both sites. If this was the preferred option then one school would effectively go through a process of closure and the new school would possibly have a new name;
- Option B: to close Hitchmead School and redistribute the children to other moderate learning difficulty (MLD) school (Weatherfield School) in Central Bedfordshire or an MLD school in their own Local Authority;
- Option C: to maintain the status quo;
- Option D: to close both schools and a re-provision of a new school which would become the subject of a competitive process for provision, unless there was a special dispensation from the Secretary of State; and
- Option E: any other proposal to come forward during the consultation process.

Members had received a copy of the draft consultation document that was due to be circulated to consultees. The consultation would be undertaken over a six week period, during which time public meetings would be held. Officers were in the process of booking the public meetings and the Committee requested that all Members be invited to attend. Meetings had been held with the Head Teachers and the Chairs of the School Governors to look at ways forward. Members noted that Head Teachers and Chairs of Governors of mainstream schools in the authority's area would be consulted and not just those in the locality. The conclusions of the consultation would be reported back to the Executive before Christmas.

Members commented that the list of consultees should include all relevant mainstream schools and appropriate Members of Parliament. The references to County Councillors should be removed in the list of consultees. Regarding the option A it was suggested that figures should be provided to outline the number of figures that stayed on at Sunnyside School post 16 years of age.

Members queried when the rationalisation of special schools would take place across the authority's area. Developing special needs provision, including proposals for special schools, could be brought forward as part of the Building Schools for the Future (BSF) programme. Co-location with mainstream schools and special schools would be looked at, as would the local provision of special needs. The needs of all groups of pupils must be met, especially vulnerable groups. The Committee recommended that the consultation document should outline that further reviews of SEN provision would be undertaken in the future.

Members were advised that the problems with Hitchmead and Sunnyside Schools had now become critical and that was why proposals for the future of these schools were being considered now. If after the consultation period it was agreed that Sunnyside School pupils move to Hitchmead then funding would need to be found to make adjustments to Hitchmead School to enable it to be accessible to wheelchairs.

Members were advised that the Head of SEN and Inclusion was arranging a visit for Members to an area special school in Cambridge during the autumn term.

Members requested that further reports on the future of Special Schools in the east of Central Bedfordshire be included in their work programme.

### **RESOLVED**

- 1) that all Members be invited to attend the public meetings on the future of Special Schools in the east of Central Bedfordshire**
- 2) that further reports on the future of Special Schools in the east of Central Bedfordshire be provided to the Committee as appropriate.**

CFL/09/21

## **Next Steps on Transforming Teaching and Learning in Central Bedfordshire**

Members received a report that built on the work of transforming teaching and learning in Central Bedfordshire that the Committee considered at its last meeting on 14 July 2009. Members' comments would form a view for a report to the Executive on 15 September by the Portfolio Holders for Children's Services and Culture and Skills.

Members received a presentation (attached at appendix A) on the following:

- the reaction to the work so far in the context of Central Bedfordshire's ambition to raise our performance to that of an excellent council
- the purpose of having a Learning Transformation Board
- feedback from the head teachers/governor meetings
- Building Schools for the Future (BSF) milestones
- how BSF works
- the integration with wider local services
- transformation
- integration with key education policy
- next steps in partnership with head teachers and governors
- preparing for readiness to deliver
- Central Bedfordshire's key stages

Five consultation meetings had taken place to gather views and information about areas for future development. Members raised concerns that the consultation process had not included front line workers. Members agreed that pupils needed to be involved and understand future development as this would have an impact on their lives.

Members thanked the Portfolio Holder for Children's Services for the letter she sent to Bedford Borough Council in response to their consultation. The Portfolio Holder for Children's Services and the Deputy Chief Executive/Director of Children, Families and Learning had met with their equivalent counterparts at Bedford Borough Council. She was very optimistic that partnership working across the borders could be accommodated.

### **RESOLVED**

- 1) that the Committee be kept informed of progress and that their work programme be amended to include updates on transforming teaching and learning in Central Bedfordshire.**

CFL/09/22

## **Executive Forward Plan**

Members received the Executive Forward Plan for the period 1 August 2009 to 31 July 2010.

**NOTED** the Executive Forward Plan for the period 1 August 2009 to 31 July 2010.

CFL/09/23 **Draft Work Programme 2009-2010**

Members considered the draft work programme for the Children, Families and Learning Overview and Scrutiny Committee. Members discussed the need to set up Task Forces to discuss youth service provision, the Cultural Strategy and child poverty. Members agreed to establish two Task Forces, one investigating provisions for youth and the other scrutinising the Cultural Strategy. The Committee also agreed in principal to establish a Task Force looking into child poverty following the conclusion of either of the other two Task Forces.

Members agreed that an invite would be circulated to all non-executive members seeking volunteers to sit on the Task Forces. It would then be down to the Chairman and Vice-Chairman to agree the number and appoint to the Task Forces. Councillors Mrs Gurney, Blaine, Bowater, Dalgarno and Dr Egan and Mr Landman indicated that they would be interested on being appointed to the Task Force looking at provisions for youth.

**RESOLVED**

- 1) ***to approve the draft work programme attached to the report, subject to the addition of the Children, Young People's Plan work (minute no. 19) and the updates on the future of Special Schools in the East of Central Bedfordshire (minute no. 20) and transforming teaching and learning in Central Bedfordshire (minute no. 21)***
- 2) ***to set up task forces to scrutinise the Cultural Strategy and provision of facilities for youth***
- 3) ***that the Overview and Scrutiny Officer submit proposals to a future meeting of the Committee detailing how a task force might be undertaken to review the provision of facilities for youth***
- 4) ***that the Overview and Scrutiny Officer submit proposals to a future meeting of the Committee detailing how a task force might be undertaken to review child poverty following the completion of either the task force to scrutinise the Cultural Strategy or the provision of facilities for youth***
- 5) ***that the Overview and Scrutiny Officer invite all non-executive members sit on the Task Forces and the Chairman and Vice-Chairman to agree the number and appoint Members to them.***

CFL/09/24 **Date of Next Meeting**

The date of the next meeting was 8 September 2009.

(Note: The meeting commenced at 10.00 a.m. and concluded at 12.56 p.m.)

This page is intentionally left blank



# Transforming Teaching and Learning in Central Bedfordshire

## Next steps to stimulate comment

# **Comments from the Scrutiny Committee to inform the report by the Lead Member – September 2009**



**Central  
Bedfordshire**

The purpose of this short presentation is to stimulate discussion on:

- The reaction to the work so far in the context of Central Bedfordshire’s ambition to raise our performance to that of an excellent council
- The purpose of having a Learning Transformation Board
- Feedback from the Head Teacher / Governor meetings



# BSF milestones



## Project inception

- clarify the vision and engage the support of stakeholders to it
- mobilise governance & management arrangements
- mobilise full project resources, financial and personnel
- appoint advisers
- resources and skills external review
- integrate BSF with other strategies

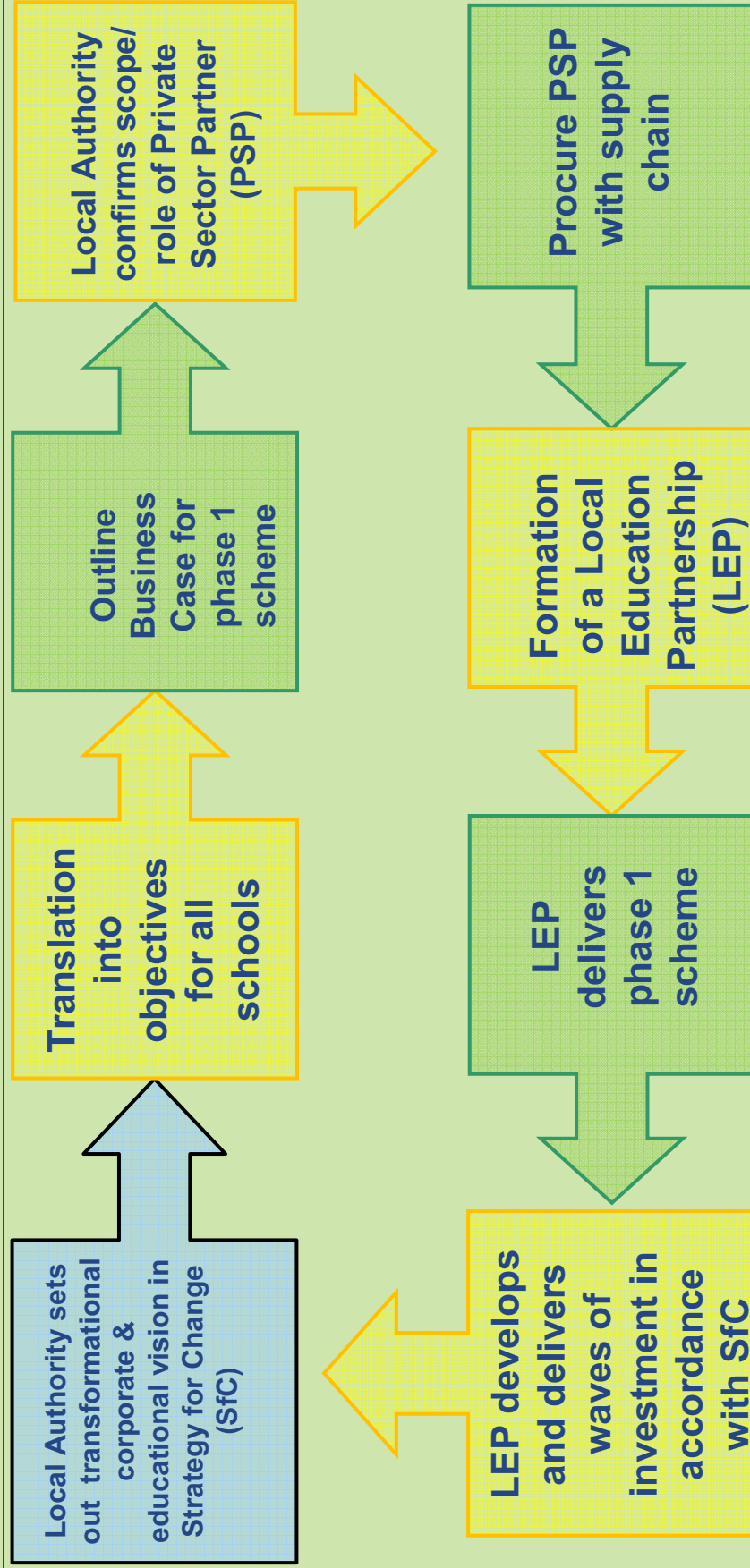
## Readiness to Deliver

- transformational overview
- deliverability
- affordability/value for money
- resources/capacity
- investment strategy

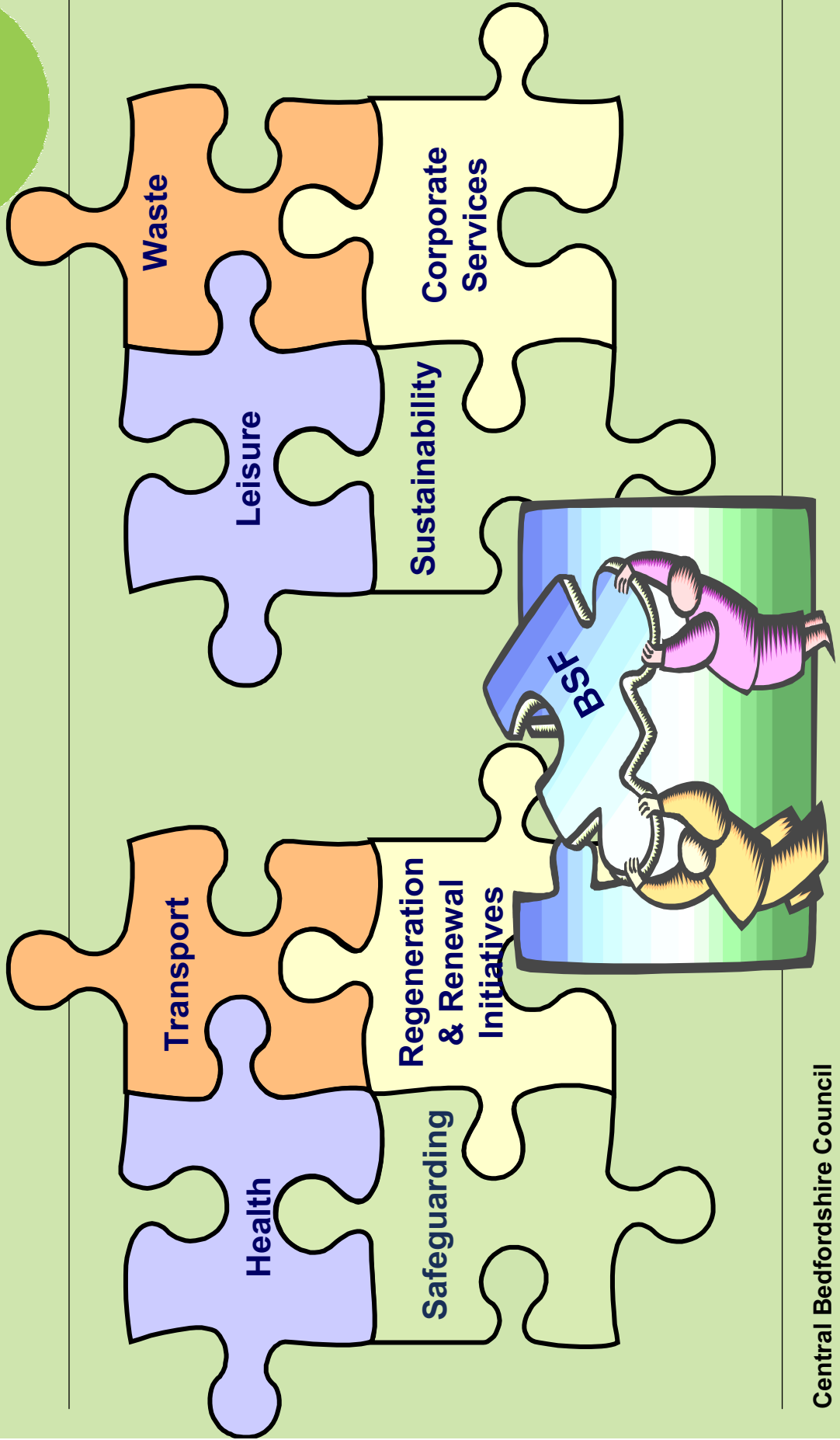
## Strategy for Change

- meet educational challenges and key objectives
- address key estate proposals
- maintain stakeholder engagement
- submit for approval to Overview & Scrutiny
- Strategy for Change formally approved by Executive

# How BSF works



# Integration with wider local services



# Transformation – common misconception

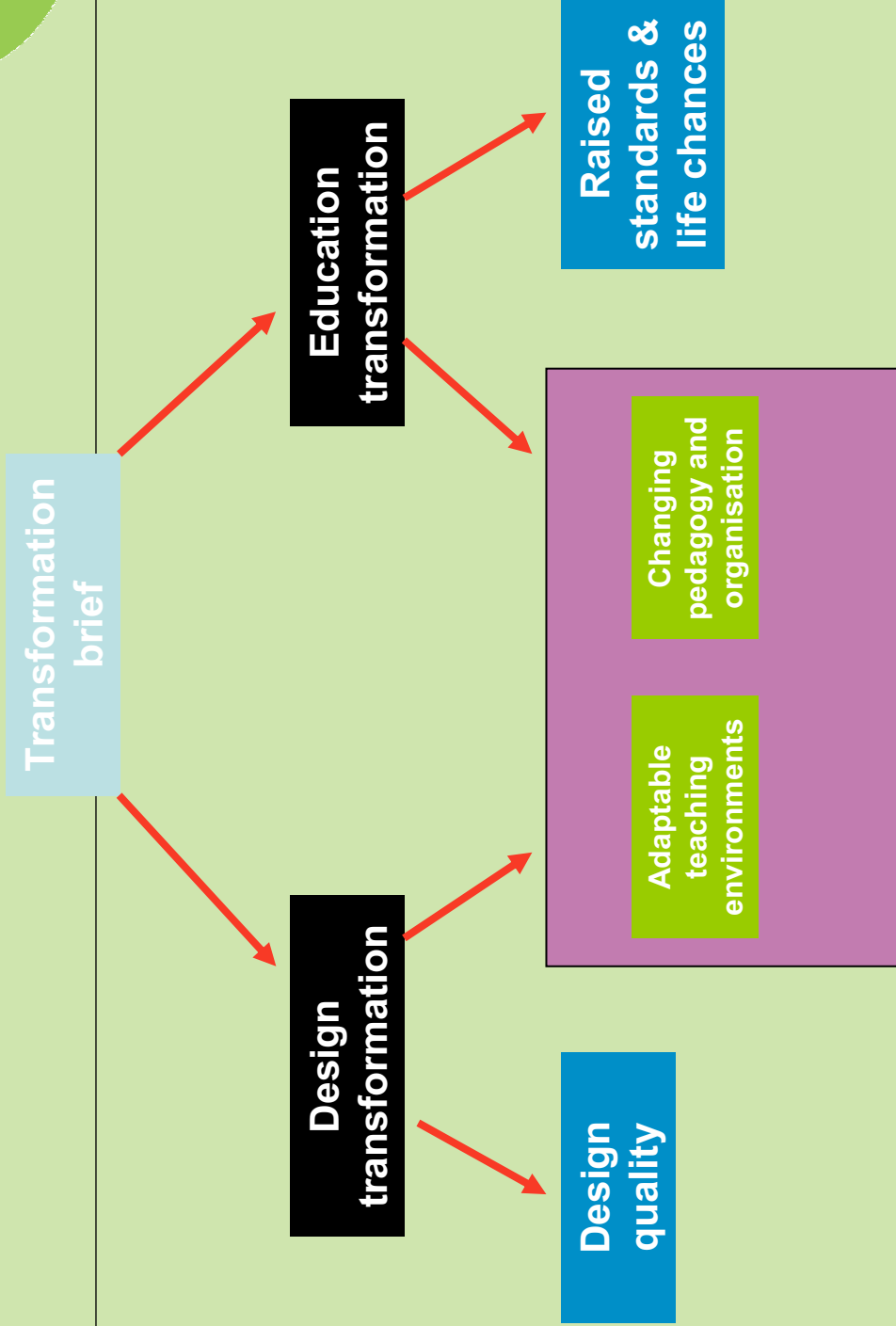


New old school

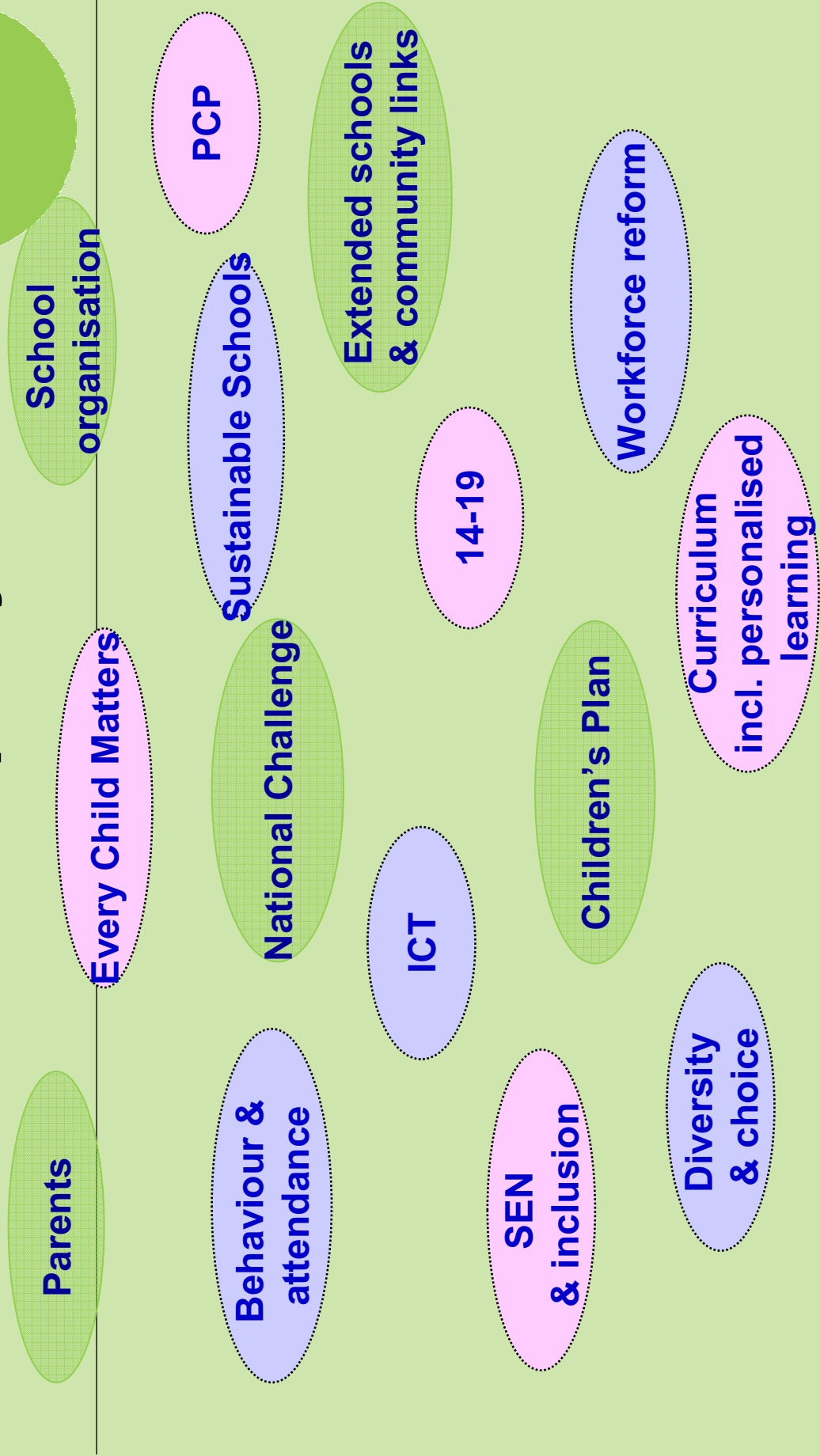


Educational transformation

# But transformation is ...



# Integration with key education policy



## Next Steps in Partnership with Head Teachers and Governors



The Lead Member has agreed to take account of Head Teachers and Governors views as to whether or not we go out to consultation on next steps. Your views are important. This will be a sensitive issue and may not be well understood

# Summary of Head teacher and Governor workshops



## Principles

- Raising standards
- Continuity of provisions 3-19
- Child & family at the centre of any change
- Locality based services
- Reflective of curriculum reform
- Based around the community
- New models of leadership



# Summary of Head teacher and Governor workshops



## Criteria

- Outcomes at GCSE
- Accountability
- Parental satisfaction
- Data on exclusions, NEETs, surplus places, deprivation, housing growth
- Value for money
- Size of schools
- Ethos

# Preparing for Readiness to Deliver



Initial planning for 11-16, 16-19 and Special Educational Needs

Regular dialogue with Office for the School Commissioner

Incorporating any required statutory consultation into BSF plan

Utilising 4ps' Expert Client Programme eg Resource and Skills Review

# **Preparing for Readiness to Deliver**



---

**Consultation with internal and external stakeholders**

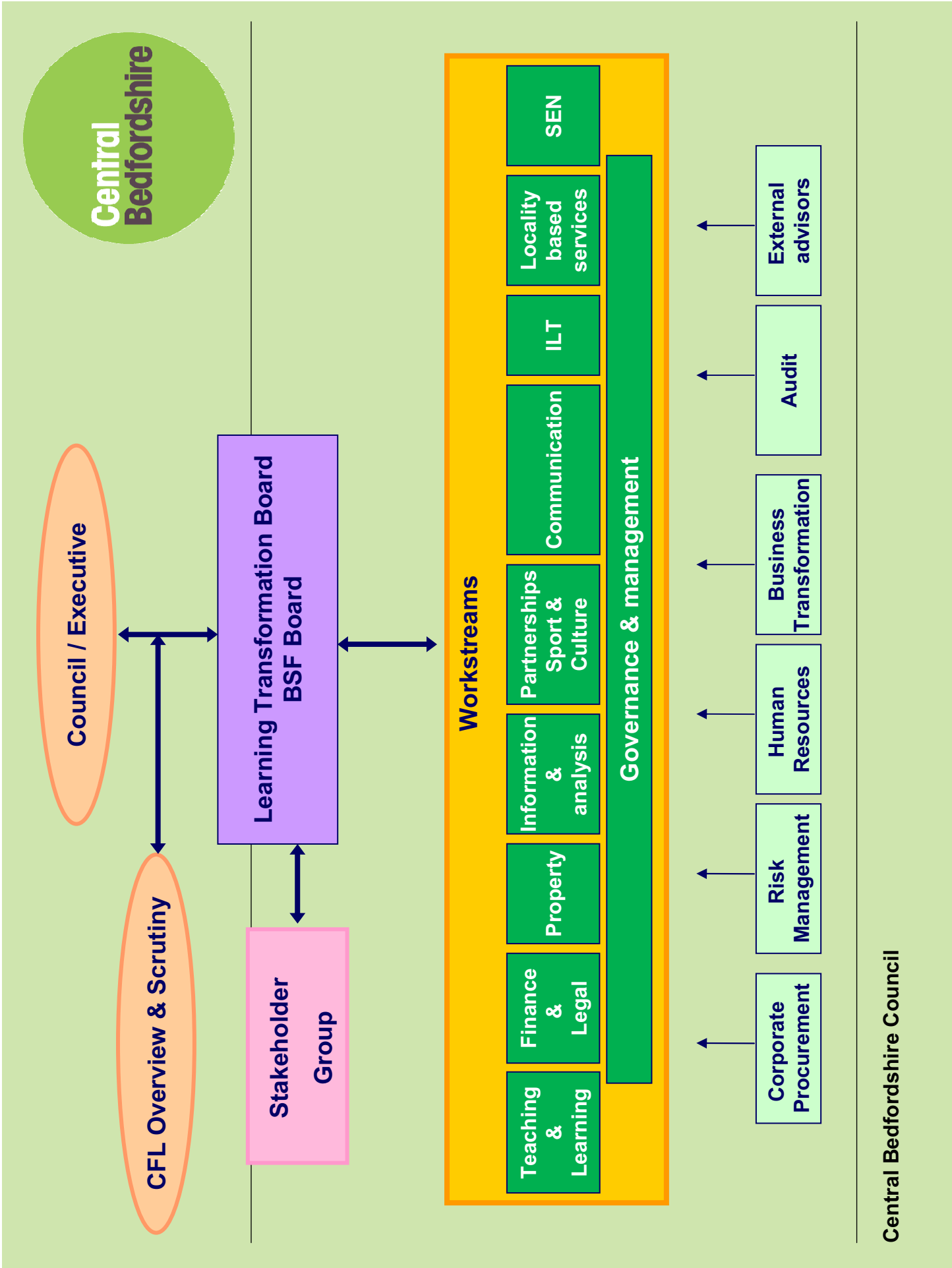
**Robust pupil place planning**

**Identification of financial and people resources**

**Senior political and corporate support**

**Self assessment using Readiness to Deliver framework**

---



# Central Bedfordshire BSF – Key Stages

---



- Project Inception – Feb 2009
- Readiness to Deliver - now
- Strategy for change – Sept 2009
- Outline Business Case – Dec 2009
- Procurement – Feb 2010
- Preferred bidder / Financial close – June 2011

This page is intentionally left blank

---

**Meeting:** Children, Families & Learning Overview & Scrutiny Committee

**Date:** 6 October 2009

**Subject:** Joint Strategic Needs Assessment – Progress Report

**Report of:** Deputy Director Children Families & Learning and Assistant Director Specialist Services

**Summary:** This report describes progress made in developing the Joint Strategic Needs Analysis (JSNA) as it relates to Children and Young People living in Central Bedfordshire.

---

**Contact Officer:** Martin Pratt. Deputy Director – Children, Families & Learning

**Public/Exempt:** Public

**Wards Affected:** All

**Function of:** Joint function between the Council and the PCT.

#### **RECOMMENDATIONS:**

- 1. that the Overview & Scrutiny Committee consider and note progress made in developing the JSNA as it relates to Children & Young People in Central Bedfordshire, and in light of its function as the primary source of population information used for developing the Children & Young People’s Plan (CYPP) and making commissioning decisions**
  - (a) agree how they would like to monitor future progress; and**
  - (b) agree how they might use the content of the JSNA to inform their work in relation to the Council’s responsibilities for Children, Young People & Families.**

#### **Background**

1. The Local Government and Public Involvement in Health Act (2007) placed a duty on upper tier local authorities and PCTs to undertake a Joint Strategic Needs Assessment (JSNA) which was introduced as part of the *Commissioning framework for health and well-being* published by the Department of Health in March 2007.

A JSNA is the means by which Local Authorities and PCTs describe the future health, care and well-being needs of the local populations and set the strategic direction of service delivery to meet those needs. It provides an opportunity to look ahead three to five years so that:

- services are shaped using local communities’ views (‘voice’);
- inequalities are reduced;
- social inclusion is increased; and

- and to inform commissioning decisions so that future investment and disinvestment decisions improve outcomes while reducing cost

The JSNA is intended to enable PCT Directors of Commissioning to work together with the Directors of Children's Services, Adult Services and Public Health to identify health and social care outcomes and performance measures, for inclusion in the Local Area Agreement (LAA) and the Children & Young People's Plan. It also informs both joint and single agency commissioning decisions.

The JSNA is a live document which is updated as new demographic information becomes available.

### **Three phase development**

3. In Bedfordshire, the JSNA was initially developed in three stages and covered the whole county. From September to November 2007 existing information was collected with a limited amount of additional data e.g. Hospital admissions and migrant workers. The document was focused principally on health activity and the adult population.
4. The second phase, from January to March 2008, was the point at which the Children & Young People's Plan needs assessment was incorporated into the JSNA. The document remained however, very health focused.
5. The major focus of Phase 3, which ran from August to November 2008, was to improve the balance of the content between Children and Adults. Some progress was made and the existing material was refined and updated. This version of the JSNA directly informed the NHS Bedfordshire Strategic Plan 2009-13.

### **Recent developments**

6. Following Local Government re-organisation it was recognised by all the partners that the existing JSNA was unlikely to be able to meet the planning and commissioning needs of the new Councils and their partners, unless the data was disaggregated and the governance arrangements reflected the new structure of Local Government. It was also recognised that, although the JSNA now contained much of the required data there was very little analysis.
7. Action has now been taken to disaggregate the data to provide a JSNA which is specific to Central Bedfordshire, to establish appropriate governance arrangements with the PCT and other health partners reflecting the Council's needs relating to both Children & Young People's services and Adult Social Care & Health and to jointly appoint project management and analytical capacity to improve the quality and accessibility of the document.
8. The current JSNA has informed the development of the Children & Young People's plan, which was considered by this committee previously, has been adopted by the Children's Trust and recently approved by the Executive. It has already added value to the planning and commissioning work being undertaken by the Council and its partners.



## Future priorities

9. There has been significant progress made with partners developing the JSNA since the inception of the new Council in April. However, it has yet to achieve its potential as the primary source of population needs analysis. Therefore future priorities are to refresh the current document during in the next six months, to develop the analytical content so that it doesn't simply describe population characteristics and trends but provides an appropriate and incisive commentary and to improve the accessibility of the document, through both revising the format and through making it available via web access. This is intended to support the increased use of the JSNA, not only by commissioners from the PCT, the Council and the Children's Trust, but also voluntary sector agencies and communities.

## Conclusion and Next Steps

10. This paper is intended as a briefing for the Committee on the historical and legal context of the JSNA and to provide a report on progress to date. The current JSNA is appended for information. The committee is asked to consider and note progress made in developing the JSNA as it relates to Children & Young People in Central Bedfordshire, and in light of its function as the primary source of population information used for developing the Children & Young People's Plan (CYPP) and making commissioning decisions to
  - **agree how they would like to monitor future progress; and**
  - **how they might use the content of the JSNA to inform their work in relation to the Council's responsibilities for Children, Young People & Families.**

## CORPORATE IMPLICATIONS

### Council Priorities:

The JSNA underpins the Children's Trust's future commissioning of services and so supports delivery of the following priorities

- **Educating, Protecting and providing opportunities for children & young people;**
- **Creating safer communities; and**
- **Promoting healthier lifestyles**

### Financial:

Use of the Joint strategic Needs analysis to inform commissioning decisions will lead to greater efficiency in the delivery of services by the Council and its partners.

**Legal:**

The JSNA is a statutory requirement placed on Local Authorities by The Local Government and Public Involvement in Health Act (2007).  
It supports the duties placed on the Council in the Children Act (2004) in relation to Children's Trust's.

**Risk Management:**

Appropriate use of population needs analysis should reduce financial and reputational risk.

**Staffing (including Trades Unions):**

N/A

**Equalities/Human Rights:**

N/A

**Community Safety:**

The JSNA will support strategic decision making intended to improve the safety of Children & Young People

**Sustainability:**

N/A

**Appendices:**

**Appendix A – Joint Strategic Needs Assessment (JSNA) Children Summary  
Central Bedfordshire (April 2009)**

(Note – Appendix A was the Executive Summary of the JSNA as at April 2009, this report outlines progress that has been made since that Executive Summary was published)

**Background papers**

(hard copy available upon request at Priory House, Chicksands)

[Joint Strategic Needs Assessment](#)



# **Joint Strategic Needs Assessment (JSNA) Children Summary Central Bedfordshire**

**Date:** April 2009  
**Review Date:** xxxxxxxx  
**Version:** 1.0

## Contents

<b>Introduction</b>	<b>3</b>
<b>Section 1: Demography</b>	<b>4</b>
<i>Dependency Ratios</i>	<b>5</b>
<i>Ethnicity and Migration 0-15 years old</i>	<b>5</b>
<b>Section 2: Social and Environmental Context Relating to Children</b>	<b>6</b>
<i>Education</i>	<b>6</b>
<i>Socio-economic Influences</i>	<b>9</b>
<i>Anti-social Behaviour</i>	<b>10</b>
<b>Section 3: Births and Infant Mortality</b>	<b>12</b>
<i>Teenage Pregnancies</i>	<b>12</b>
<i>Infant Mortality (inc affect on life expectancy)</i>	<b>12</b>
<b>Section 4: Child Mortality (inc affect on life expectancy)</b>	<b>13</b>
<b>Section 5: Child Morbidity</b>	<b>14</b>
<i>Low Birth weight</i>	<b>14</b>
<i>Childhood Obesity / Eating Disorders</i>	<b>14</b>
<i>Diabetes</i>	<b>14</b>
<i>Oral Health</i>	<b>15</b>
<i>Hospital Care</i>	<b>15</b>
<i>Accidents/Injuries</i>	<b>15</b>
<i>Breast feeding</i>	<b>15</b>
<b>Section 6: Mental and Emotional Health.</b>	<b>16</b>
<i>Child and Adolescent Mental Health</i>	<b>16</b>
<b>Section 7: Sexual Health</b>	<b>17</b>
<i>Rates of Common STI Infections</i>	<b>17</b>
<i>At Risk Populations</i>	<b>17</b>
<b>Section 8: Healthy Lifestyle</b>	<b>18</b>
<i>Physical Activity</i>	<b>18</b>
<i>Participation in Sport</i>	<b>18</b>
<i>Personal and Social Development and Recreation</i>	<b>18</b>
<i>Travel to School</i>	<b>18</b>
<i>Sedentary Life Styles</i>	<b>18</b>
<i>Diet and Nutrition</i>	<b>19</b>
<i>School Lunches</i>	<b>19</b>

<i>Immunisations</i>	19
<b>Section 9: Smoking, Alcohol and Illegal Drugs</b>	<b>20</b>
<i>Smoking</i>	20
<i>Smoking In Pregnancy</i>	20
<i>Children Smoking</i>	20
<i>Alcohol</i>	20
<i>Illegal Drugs</i>	21
<b>Section 10: Vulnerable Groups</b>	<b>22</b>
<i>Looked after Children</i>	22
<i>Children with Learning Difficulties</i>	22
<i>Gypsy and Traveller Children</i>	22
<i>Safeguarding Children</i>	22
<i>Domestic Violence (children)</i>	23
<i>Children in Need and Child Protection</i>	23
<b>Section 11: Children – Making a Positive Contribution</b>	<b>24</b>
<i>Engage in Decision Making and Support the Community and the Environment</i>	24
<i>Law Abiding and Positive Behaviours</i>	24
<i>Develop Positive Relationships and Choose not to Bully or Discriminate</i>	24
<i>Self-confidence</i>	24
<i>Develop Enterprising Behaviour</i>	25
<b>Section 12: Economic Wellbeing</b>	<b>26</b>
<i>Ready for Employment</i>	26
<b>References</b>	<b>27</b>

## Introduction

On the 1<sup>st</sup> April 2009 Bedfordshire County Council ceased to exist. All services previously hosted by the County Council are now being provided by either Bedford Borough Council or Central Bedfordshire Council depending on the area concerned.

Central Bedfordshire will now replace both Mid and South Bedfordshire District Councils to form a single unitary authority.

Available statistical data at the time of writing this summary document varies and where possible the new unitary data is used. Comparable data for Bedfordshire County or the Eastern Region has been used, where this is not readily available the figures for England or England and Wales have been used. Some figures may not total due to rounding.

Should something be written here about the 5 aims of Every Child Matters:

- Be Healthy
- Stay Safe
- Enjoy and Achieve
- Make a positive Contribution
- Achieve Economic Well Being

## Section 1: Demography

Around 254,600 people live in Central Bedfordshire (Bedfordshire County Council 2008 forecast), or if using the ONS Estimates 2007 there are around 252,100. Children aged under 16 years comprise of nearly 20 percent of the population, and 11 percent are aged 16-24.

### Forecasts of Resident Population 2008/ Mid Year Estimate 2007

	Central Bedfordshire	ONS Mid Yr Est	Bedfordshire County	ONS Mid Yr Est
<b>0-4</b>	15,500 (6.1%)	15,400 (6.1%)	25,500 (6.1%)	24,600 (6.0%)
<b>5-9</b>	15,400 (6.0%)	15,300 (6.0%)	24,600 (6.0%)	24,700 (6.0%)
<b>10-14</b>	15,500 (6.1%)	16,100 (6.3%)	25,500 (6.2%)	26,100 (6.4%)
<b>15-19</b>	16,100 (6.3%)	16,200 (6.4%)	25,900 (6.3%)	26,400 (6.4%)
<b>20-24</b>	14,100 (5.5%)	13,900 (5.5%)	23,400 (5.7%)	23,200 (5.7%)
<b>Total 0-16</b>	52,840 (20.8%)	58,200 (20.3%)	80,280 (19.6%)	94,100 (23.0%)
<b>Total 0-24</b>	76,600 (30.1%)	76,900 (30.5%)	124,400(30.4%)	125,000 (32.5%)
<b>Total Population</b>	<b>254,600</b>	<b>252,100</b>	<b>409,400</b>	<b>407,000</b>

Source: BCC population estimates and forecasts 2008 & ONS Mid Year Estimates 2007

Currently there are slightly less than 55,000 children aged under 16 in Central Bedfordshire. This is expected to increase gradually reaching just over 32,000 by 2016, and then levelling off to 2021.

### Forecast of Resident Population 2021

	Central Bedfordshire	Bedfordshire County
<b>0-4</b>	15,700 (5.6%)	25,500 (5.5%)
<b>5-9</b>	16,300 (5.8%)	26,300 (5.8%)
<b>10-14</b>	16,500 (5.8%)	27,200 (6.0%)
<b>15-19</b>	14,400 (5.1%)	24,200 (5.3%)
<b>20-24</b>	13,200 (4.7%)	22,600 (5.0%)
<b>Total 0-16</b>	54,260 (19.2%)	83,340 (18.3%)
<b>Total 0-24</b>	76,100 (26.9%)	125,800 (27.5%)
<b>Total Population</b>	<b>282,400</b>	<b>454,900</b>

Source: BCC population estimates and forecasts 2008.

When comparing the 2008 population forecasts, published in BCC "Population estimates and forecasts 2008" and ONS "Mid-2007 Population Estimates: Quinary age groups and sex for local authorities in the United Kingdom", ONS reported that Central Bedfordshire is to have an additional 100 0-19 year olds.

Note: Population Estimates includes ONS (Office of National Statistics) estimates, GP-based estimates and school census and forecasts

## Dependency Ratios

In 2021 the dependency ratio is predicted to drop to 29.2% for Central Bedfordshire which will have an impact on those who are working to maintain those who are not.

### Estimate of Resident Population 2008

	Central Bedfordshire	ONS 2007 Mid Yr Est	Bedfordshire County	ONS 2007 Mid Yr Est
<b>*Child Dependency Ratio</b>	29.5%	28.4%	30.0%	30.2%

Source: BCC population estimates and forecasts 2008 & ONS Mid Year Estimates 2007

### Estimate of Resident Population 2021

	Central Bedfordshire	Bedfordshire County
<b>*Child Dependency Ratio</b>	29.2%	29.5%

Source: BCC population estimates and forecasts 2008.

\*The Child Dependency Ratio (number of children 0-15 years/ working age 16-64 years) measures the economically inactive population compared to the economically active population.

## Ethnicity and Migration 0-15 years old

In 2006 ONS reported that 91.8% of the Central Bedfordshire population is white and has a lower percentage aged under 16 classified as White British than Bedfordshire and England as a whole.

Ethnic Group Number (Percentage)	0-15 years
White	45,800 (91.8)
Mixed Ethnicity	1,700 (3.4)
Asian or Asian British	1,400 (2.8)
Black or Black British	700 (1.4)
Chinese or Other Ethnic Group	300 (0.6)

Source: ONS, Resident Population Estimates by Ethnic Group, All Persons, 2006

Minority ethnic groups comprise around 8 percent of the population aged under 15 in Central Bedfordshire, with Asian and Mixed comprising the largest minorities.

Currently there are no reliable population projections for ethnic populations.

Polish nationals dominate the recent migrant flows, making up at least 40% of applications for National Insurance numbers from all nationalities. In terms of concentration within the county, 40% of applicants in Central Bedfordshire were of African applicants.



## Section 2: Social and Environmental Context Relating to Children

### Education

#### Ready for School (pre-school)

Children from some ethnic groups, wards and social classes are significantly less likely to attend pre-school provision.

Bedfordshire is making good progress in increasing full day care provision.

A positive Home Learning Environment is crucial in Early Years development.

#### Attainment

Bedfordshire is above both national and statistical neighbour averages in participation in full-time education at ages 16 and 17. The gap between girls (87.2%) and boys (79.8%) staying in full-time education after Year 11 is significant and widened between 2005 and 2006.

Around six percent of 16-18 year olds in Bedfordshire are not in education, employment or training. Boys are more likely to choose work based learning than girls, but are also 3 times more likely to be in employment that does not offer training.

Pupils with Special Needs are less likely to stay in education than the average for Year 11 leavers; they are more likely to seek employment instead, and more often jobs that do not offer training.

Participation in education by both 16 and 17 year olds has increased steadily since 2001 though there is a significant and persistent decline in participation from ages 16 to 17. Level 2 attainment by age 19 has improved steadily since 2003/04, both in the numbers achieving by age 16, and the additional numbers attaining Level 2 at ages 17-19.

GCE A Level entries receiving a pass rose to 98.7% in 2007, and the percentage of A Grades is also increasing. Girls outperform boys. Pupils eligible for Free School Meals and those with Special Needs both perform below average, and most minority ethnic groups perform below 'White' pupils.

Of the Bedfordshire children that did the GCSEs at the end of KS4 in 2006/07, 57.6 percent of children achieved 5+ A\* to C. Comparative figures for England and the East of England region were 62 percent and 61.2 percent respectively.

While girls constituted 56.1% of all A Level Biology entries in 2007 and almost half of Chemistry entries (49.2%), they are under-represented in Maths (34.6%) and, especially, Physics (16.1%).

Successful course completion rates in Further Education colleges are increasing for both males and females. There are no gender differences in the number taking

apprenticeships or in success rates, though males are approximately 3 times more likely to take Advanced Apprenticeships (Level 3).

### Attend and Enjoy School

There are marginally higher levels of authorised absence in Bedfordshire's lower schools compared to statistical neighbours, but attendance at middle and upper schools compares much better.

### Achieve Stretching National Educational Standards at Primary

Bedfordshire continues to perform well at Key Stage 1 in comparison with statistical neighbours, achieving level 2+

### Achieve Stretching National Educational Standards at Secondary

Bedfordshire's school performance at Key Stage 2 has improved, but still falls short of statistical neighbour averages in English and Maths. Overall average point scores fell between 2005/6 and 2006/7, reversing good improvement made in the two previous years.

Bedfordshire pupils currently make inadequate improvement compared to the national average in terms of the proportion of children attaining two levels higher at KS3 than KS2.

This has in part been attributed to the 3-tier school structure in Bedfordshire, though analysis shows this is not entirely to blame.

KS4 attainment has improved consistently overall, but with faster progress made by Bedfordshire's boys than girls (compared to statistical neighbours). This has led to a rapidly closing gender gap in attainment at this level.

### School Quality

In line with national trends, the number (and proportion) of schools judged as poorly performing by OFSTED has greatly reduced in Bedfordshire. There are now less than half as many such schools compared to 1999.

As at April 2008, there was one school in the County in special measures (Northfields Upper), and two schools with 'notice to improve'. In November 2008 Northfields had recovered, and no Bedfordshire schools were in special measures.

This was an improvement from the 2006/07 academic year, when there were two schools in special measures and five with 'notice to improve'.

## The Impact of Socio-Economic Disadvantage on Pupil Performance

Young people from socio-economically disadvantaged backgrounds, and those with special educational needs, mostly continue to suffer significant and persistent lifelong disadvantage for themselves.

Research has shown that bright young people from disadvantaged backgrounds are often not able to maintain their attainment lead over less able children from better-off families, even for the duration of primary school.

The attainment gap between the pupils who are entitled to Free School Meals (FSM) and those who aren't gets larger at each Key Stage, resulting in less than half as many FSM pupils getting 5 A\*-C grades at GCSE compared to their non-FSM classmates.

The gap is even wider for pupils with SEN, of which four times fewer achieve 5 GCSEs graded A\*-C. At Key Stages 2 and 4, this gap does not appear to be closing.

The gap between children eligible for free school meals (FSM) and non-FSM, and children with special educational needs (SEN) and non-SEN pupils grows bigger at each Key Stage. However, pupils with SEN at Key Stages 2 and 4 are not catching up with children without SEN.

Over time, FSM pupils have been improving more rapidly than their non-FSM peers, giving some hope of beginning to close this gap.

## Truancy

Absenteeism rates in 2006/7 for Bedfordshire pupils was around 6.2%, of which 0.7% were unauthorised (truancy). Comparative figures for England were 6.5% and 1% percent respectively.

## Not in Education, Employment or Training (NEET)

Latest government figures report that 9.4% 16 to 18 year olds were NEET at the end of 2007 which was a reduction from 10.4% at the end of 2006. In Bedfordshire it is estimated that 740 (5.8%) were NEET compared to 6.2% for the East of England. (Source: [www.dcsf.org.uk](http://www.dcsf.org.uk), *Every Child Matters*.)

NEET rates at ages 16-18 are declining, and at a faster rate than national or statistical neighbour averages. The traditional September peak in NEET rates is now much less pronounced, reflecting the impact of the September Guarantee. Care leavers are more likely to be NEET at age 19, though Bedfordshire rates have declined and are now comparable to national and statistical neighbour averages.

Unemployment among those 16-19 is heavily concentrated in the more deprived wards in Houghton Regis

## **Socio-economic Influences**

### **Child Poverty - Children in Households Dependant on Benefits**

Although child poverty in the UK has decreased in the last decade, the number of children living in poverty actually increased between 2004/05 and 2006/07.

Child poverty can seriously affect a child's development and future well-being. There is a strong correlation between poverty and well-being, educational attainment, skills levels, worklessness, aspirations, health and self-esteem. (Source: *Public Health Report, issue 3, Central Bedfordshire, March 2009*)

In Central Bedfordshire, around 1 in 9 children live in income-deprived households. A child born into a poor family is more likely to be born early, to be of low birth weight, or both. They are more likely to die in the first year of life, to die from an accident in childhood, to have low educational achievement, turn to crime, to be poor as an adult and raise their own children in poverty, and eat less healthily

### **Index of Multiple Deprivation (IMD)**

Central Bedfordshire is an affluent Unitary Authority with Mid Bedfordshire ranking 340 and South Bedfordshire ranking 263 out of 354 local authorities in the 2007 Index of Multiple Deprivation in England, (rank of 1 indicates the most deprived). The Indices of Deprivation 2007 have been produced at Lower Super Output Area (LSOA) level, of which there are 32,482 in the country. Of these, Central Bedfordshire has no LSOA's ranked in either the top 10% or 20%.

### **Income Deprivation Affecting Children Index (IDACI) Children in Households Dependent on Benefits**

The IDACI represents the proportion of children aged 0-15 living in income deprived households in each Lower Super Output Area (LSOA). 4 LSOA'S were ranked in the top 20% deprived areas. Manshead, Tithe Farm, Houghton Hall, and Parkside Wards all have an LSOA ranked in the top 20%.

### **Housing**

Sustainable communities can only be developed with the involvement of all residents. While we have information showing priorities for adults, there is very little available evidence showing priorities for children, and what is being done to meet these priorities.

There is a high correlation between the proportion of children living in overcrowded conditions and deprivation. A significant number of children in more deprived wards also lack direct ground floor access to private play areas.

The high cost of ownership and lack of social housing in villages and rural areas may be adversely affecting the sustainability of these communities.

## Transport

The Accessibility Study for Bedfordshire's Local Transport Plan demonstrated that there are no significant access issues in the County during the day.

Young people who live in households in small towns and rural areas can be more isolated and less able to meet friends outside the working day, due to the unavailability of a lift and the absence of public transport.

## **Anti-social Behaviour**

### Bullying

A significant minority of pupils worry about bullying, with some of them being afraid to go to school. A fairly high proportion of children would not share their concerns about bullying with anyone.

### Racist Incidents in Schools

Bedfordshire uses the Macpherson Report's (1999) definition of a racist incident, "an incident which has been perceived to be racist by the victim or any other person".

Around 4 in every 1,000 pupils were subject to a racist incident in 2005/06. Boys are more likely to initiate a racist incident, and also to be victim to a racist incident. Most reported incidents are verbal, and 60% of Bedfordshire's schools reported that they had no racist incidents during the year.

During 2005/06, some 320 racist incidents, initiated by both pupils and adults, were reported in Bedfordshire schools. This equates to 4.9 incidents per 1,000 pupils at Bedfordshire schools.

### Crime and Anti-social Behaviour in and out of School

Custodial sentences are more often given to young people in Bedfordshire than on average.

### Children as Victims of Crime

Data from the police showed a decrease in crime against children in 2007, and the level of crime recorded increases as children grow older.

In 2007, 685 children were recorded as the victims of crime, a decrease from 858 children in 2006. The most frequent crime type in all age groups was 'Assault with injury' followed by 'Personal Robbery'. Both of these crime types involve the use, or threat of force. The number of children affected increased with age in all categories.

Children from disadvantaged groups are more likely to be victims of crime.

## Security and Stability

In Bedfordshire, older children appear more likely to feel unsafe in their local area after dark, and by year 10, up to 20% carry a weapon for protection, or are aware that their friends do so. Modern technology also has an impact on children's safety. It enables contacts to be made with children that can result in 'real world' meetings, and it has also expanded the range of information that they have access to – almost 60% of children who use the internet regularly have seen pornographic images.

## **Section 3: Births and Infant Mortality**

### ***Teenage Pregnancies***

There has recently been a rise in the rate of teenage conceptions in Bedfordshire. We do not know why this is the case or which interventions have been effective in reducing conception rates historically.

In 2006, there were 22.4 teenage pregnancies per 1,000 women aged 15-17 in Mid Bedfordshire compared to 40.2 in South Bedfordshire, while the East of England had 33.3.

### ***Infant Mortality (inc affect on life expectancy)***

In 2003/5, the infant mortality rate was 4.6 per 1000 live births in Bedfordshire compared to the regional average of 4.2. The low numbers of infant deaths means that differences in rates within Bedfordshire and any recent changes cannot be detected. (Source: *Bedfordshire PCT (2007), Public Health Annual Report 2007/008, Issue 3*)

There were 113 deaths in children under 15 in Bedfordshire between 2003 and 2005.

#### **Section 4: Child Mortality (inc affect on life expectancy)**

The top three reasons for hospital admission in children aged under ten are: diseases of the respiratory system, injury, poisoning and other consequences of other external causes, and symptoms, signs and abnormal clinical laboratory results. These differ slightly in the under ones and 10-14 year olds.

Deaths in young people from suicide are rare with only 55 per year across the East of England. However, Suicide is a leading cause of death in adolescence and accounts for around 30 percent deaths in people aged 15-24.



## Section 5: Child Morbidity

### Low Birth weight

Over the last 12 years the proportion of low birth weight babies in Central Bedfordshire has remained fairly static around a mean of 6.8 percent (the 2007 value is 6.2 percent), about 1 percentage point lower than the East of England average of 7.1 percent. Smoking cessation and good nutrition in pregnant women will help to reduce the number of low birth weight babies.

#### Low birth weight births as a percentage of all births 2006/07

	Raw low birth weight
Mid Bedfordshire	6.5%
South Bedfordshire	9.8%
Bedfordshire	8.9%
East of England (2006)	7.2%
England (2006)	7.9%

### Childhood Obesity / Eating Disorders

Joint analysis of Child Obesity by Bedfordshire PCT and the County Council's Corporate Policy Group showed that there were differences in levels of obesity according to gender, age ethnicity and location within Bedfordshire.

- More boys than girls were found to be obese
- Central Bedfordshire had lower proportions of obese children than the rest of the county
- The proportion of children who were obese was a lot higher in Year 6 than in Year R
- Non white ethnic groups had more obese children than White British
- Wards with areas of high deprivation tend to have a higher proportion of obese children.
- It is also an issue in some areas which are not so deprived

#### The percentage of children found to be overweight and obese for each year are:

	Yr R	Yr 6
Overweight	12.8%	12.9%
Obese	9.3%	15.1%

### Diabetes

The recorded diagnoses of diabetes in the under 20s is around 0.14%. The proportion of the child population estimated to be diabetic is expected to be around 88 children in the Central Bedfordshire area. (Source: Bedfordshire PCT (prevalence), and BCC population estimates and forecasts 2008)

## **Oral Health**

In Bedfordshire in 2003-2004, 65-70 percent of five-year-olds have no experience of dental decay. Oral health in Bedfordshire is significantly better than in England; with Bedfordshire 5-year-olds have an average of 0.9 decayed, missing or filled teeth compared to 1.15 decayed, missing or filled teeth for England and Wales.

## **Hospital Care**

*To be filled in*

## **Accidents/Injuries**

Most children do not experience serious injury, and the number of accidental deaths is low. Injuries from road traffic accidents remained relatively steady between 2003 and 2007. Boys are much more likely to be involved in accidents (of all types) than girls, and older children are more likely to have an accident than younger children.

Death from injury is very rare. In Bedfordshire between 2004 and 2006 there was an average of one death per year from 'external causes' among the 0-15 age group, and five deaths per year among the 16-19 age group. The majority of these were the result of accidents. (*Source: ONS, Vital Statistics 3, Mortality by cause*)

## **Breast feeding**

The proportion of mothers initiating breast-feeding in Bedfordshire was low; 62.2 percent in 2007/08, compared to 78 percent nationally. Breast feeding initiation has improved at Bedford Hospital and was at 73.5 percent in the third quarter of 2008/09. However in Luton & Dunstable Hospital initiation rate is still only 63.2 percent. This is below target.

At first contact with Health visitor (10 days to 3 weeks) breast feeding in Bedford was 54.6 percent, and by the 6<sup>th</sup> – 8<sup>th</sup> week, the rates fell to around 31.2 percent in the third quarter of 2008/09 compared to figures of around 50 percent at national level.

## **Section 6: Mental and Emotional Health.**

### ***Child and Adolescent Mental Health***

Most children are happy but exams remain a significant worry for young people. While information on the prevalence of mental ill-health remains poor, nearly a quarter of children are 'worried a lot' and this worry increases with age. Over 90% of children say they have one or more good friends but less than half of teenagers think their classmates are 'kind and helpful'.

Nearly half of teenage girls are worried about how they look, and in the same survey we learnt that teenage girls are less likely to feel fit, especially by Year 10. This is more pronounced in the South of the County.

Family functioning is more relevant to child well-being than family status. The quality of relationships in the family is particularly important.

Self-harm and suicides are more frequent among teenagers than younger children, and are linked particularly to poor family functioning, the type of housing occupied and housing tenure.

In 2004, nationally, 1 in 10 of those aged 5-16 had a mental health problem. This proportion has not changed since 1999. Boys are more likely to have a mental disorder than girls. Among 5-10 year olds, 10 percent of boys and 5 percent of girls had a mental health problem. Among 11-16 year olds, the proportions were 13 percent for boys and 10 percent for girls

## **Section 7: Sexual Health**

### ***Rates of Common STI Infections***

Incidence of sexually transmitted infections in Bedfordshire is in line with the national average.

Infection with Chlamydia (diagnosed in clinics of genito-urinary medicine) is increasing. Some of this increase is due to increased testing but the high proportion of positive tests is of concern

Around 8 percent of 15-24 year olds in Bedfordshire had been tested for Chlamydia by the end of January 2009. The number of testing kits requested has gone up dramatically in the last couple of months compared to the first six months of the financial year. 1 in 10 young people screened opportunistically (i.e. without symptoms) for Chlamydia were found to be infected

Infection with Gonorrhoea is decreasing from a peak in 2003/04.

In 2006, there were 31.2 teenage pregnancies per 1,000 women aged 15-17 in Central Bedfordshire compared to 33.3 in the East of England.

### ***At Risk Populations***

*To be filled in*

## **Section 8: Healthy Lifestyle**

### ***Physical Activity***

Involvement in organised physical activity appears to have risen over the last ten years, but this needs to be set in the context of a rise in obesity and a decrease in the percentage of pupils walking to school.

### ***Participation in Sport***

In 2006/07, 92% of 5-16 year-olds had undertaken a minimum of 2 hours per week on high quality sport and PE within and beyond the curriculum, compared to a Government target of 85%.

### ***Personal and Social Development and Recreation***

A high proportion of children in Bedfordshire attain nationally determined goals at the Foundation Stage for Personal, Social and Emotional Development.

Some children spend large amounts of their free time in sedentary activities. When they are online and/or watching TV, it could be difficult to meet their needs for personal and social development. More young people are taking up sport, but they remain concerned about the lack of access to play facilities. Adults remain concerned about a perceived lack of activities for teenagers.

### ***Travel to School***

At primary school, 55% of pupils walk to school, and 40% are taken by car.

At secondary school, 44% of pupils walk to school and 21% are taken by car.

Use of dedicated pupil bus services in Bedfordshire is higher than among our statistical neighbours.

### ***Sedentary Life Styles***

Children have more access to new technology and media than ever before. This provides opportunities to find information and have contact with remote friends and family. However some children are tending to spend too much time in front of the television or computer and there are dangers that it is:

- reducing their social interaction
- damaging to their health and well-being
- putting increased consumer pressure on them

This is important because if by spending more time in sedentary occupations, children are becoming more obese, it will affect their health in adult life.

## ***Diet and Nutrition***

Only 22 percent of children (ages 12 to 13 years) in Central Bedfordshire eat five or more portions of fruit and vegetables per day; 52 percent eat some fresh fruit each day, compared to 29 percent eat sweets and chocolate every day.

## ***School Lunches***

Monitoring by Bedfordshire County Council indicates that, for schools within the central school meals contract, only 35% of pupils (all ages) are actually taking up the lunches on offer. The Balding Survey (Yr 8 and 10 only) confirms a similar average rate of take-up (33%) for all our schools. We also learn from the same survey that 15% of Yr 8 and 10 pupils are having no lunch at all, while 42% of pupils eat a packed lunch (making it the most frequently used option). We do not know what is included in packed lunches, but we do know that 15% of pupils had already eaten packet snacks/chocolate/sweets for breakfast.

## ***Immunisations***

For 2005-06 at age 2 Central Bedfordshire had a lower percentage uptake than the national rate. A similar situation is to be found at ages 1 and 5. A similar situation is to be found at ages 1 and 5.

In order to prevent the spread of measles, at least 90 percent of children should be vaccinated, but in a small number of practices, coverage was below this level in 2007/8. Although more children were vaccinated against measles, mumps and rubella by their 2nd birthday than in the East of England and England (84 percent), by the age of 5, only 72 percent of children in Bedfordshire had received both the recommended MMR vaccinations compared to a regional average of 76 percent.

Vaccinations against diphtheria, whooping cough, tetanus, polio, Haemophilus influenza b, and meningitis are above 90 percent for the PCT as a whole but this hides some variation among GP practices in Bedfordshire.

## Section 9: Smoking, Alcohol and Illegal Drugs

### Smoking

Nationally it is estimated that 450 children start smoking everyday. By the age of 15 years old 23% of young people are regular smokers. Studies have shown that due to the addictive nature of nicotine, the earlier a person starts smoking the more likely he or she will become a heavy smoker. Approximately, half of today's young smokers will die early from smoking related diseases.

About 17,000 children under the age of 6 are admitted to hospital every year with illnesses resulting from second hand smoke. (Source: ONS, Stop Smoking Service Manchester)

### Smoking In Pregnancy

Data from the third quarter of 2008-2009 show that 15.7 percent of Bedfordshire women were smoking at the time of delivery. At Bedford Hospital the rate is 14.1 percent and at Luton & Dunstable Hospital it is 21.5 percent for Bedfordshire women. There is still work to be done at Luton & Dunstable Hospital to meet the government's objective of 15 percent by 2010.

At ward level there is wide variation from 5% to 45% of households with a pregnant woman having at least one smoker.

### Children Smoking

The percentage of girls smoking in Central Bedfordshire is a particular cause for concern especially at Yr 10, but note that nearly all of the regular smokers in this group want to give up.

#### Pupils reporting to smoke 'regularly' or 'occasionally' (%)

	Year 8		Year 10	
	Boys	Girls	Boys	Girls
<b>Central Bedfordshire</b>	3	4	13	35

Source: The Balding Survey, Schools Health Education Unit (2006).

Note: 'occasionally' means less than 1 per week.

18 percent of girls and 16 percent of boys in year 10 in Central Bedfordshire schools reported that they smoke occasionally or regularly.

### Alcohol

In 2006, a survey found the percentage of 14-15 year olds in Bedfordshire reporting having at least one alcoholic drink in the previous week had increased to 53 percent.

47 percent of year 10 had at least 1 alcoholic drink in a week prior to the Balding Survey 2006, and 24 percent had drunk on more than one day in that week. Estimates for Bedfordshire suggest that there are nearly 1900 young people aged under 19 who are dependent drinkers and over 7,700 drinking at hazardous/harmful levels

### ***Illegal Drugs***

Excessive alcohol use and exposure to drugs continue to be common among young people in Bedfordshire, despite an awareness of the risks involved. But consumption of alcohol and drugs are falling among 11-15 year-olds.

The hospital admission rate for poisoning and mental disorders due to substance misuse was significantly lower in Bedfordshire in the period 2001-2005 compared to the regional average (50 per 100 000)



## Section 10: Vulnerable Groups

### *Looked after Children*

No single source identifies all children with disabilities (CwD) in Bedfordshire. As of February 2008, the Social Services database (SWIFT) identified **487** children aged 0-18 who are supported for one or more disabilities by Children's Services (individual needs are not recorded), and **528** young people aged 18-25 with an involvement from one or more specialist teams for disabilities in Adult Services.

The database of pupils in maintained schools within Children's Services (Tribal), which is shared with schools, separately records **4,085** children in February 2008 as having one or more Special Educational Needs (SEN - school action plus or statemented). Data on CwD is not currently available from health systems.

### *Children with Learning Difficulties*

No single source identifies all children with disabilities (CwD) in Bedfordshire. As of February 2008, the Social Services database (SWIFT) identifies **487** children aged 0-18 who are supported for one or more disabilities by Children's Services\* (individual needs are not recorded), and **528** young people aged 18-25 with an involvement from one or more specialist teams for disabilities in Adult Services†.

The database of pupils in maintained schools‡ within Children's Services (Tribal), which is shared with schools, separately records **4,085** children in February 2008 as having one or more Special Educational Needs (SEN - school action plus or statemented). Central PCT systems do not identify specific disabilities: information is distributed across many unlinked systems and paper records in health organisations.

### *Gypsy and Traveller Children*

In England, there are about 1,100 Irish Travellers and 2,300 Gypsy/Roma Students in secondary schools, fewer than half the number registered in primary schools. Both Gypsy/Traveller groups have extremely low attainment.

Access to education and attendance by primary aged Traveller children continues to improve, but not enough Traveller pupils attend or stay on at secondary school. The average attendance rate for Traveller pupils is around 75%. This figure is well below the national average and is the worst attendance profile of any minority ethnic group (James Foley, 'Pupil characteristics and class sizes in maintained schools in England, January 2006 (provisional),' National Statistics: First Release [DfES, London, April 2006]).

Ofsted considers that about 12,000 Traveller children are not registered with a school and that at Key Stage 4 this represents about 53% of these pupils

### *Safeguarding Children*

*To be filled in*

### ***Domestic Violence (children)***

The exact prevalence of domestic violence is unclear, as it is dependent on incidents being reported, and recent increases in the number of reported incidents in Bedfordshire are indicative of efforts to improve reporting, rather than a signal of increased domestic violence. National estimates suggest that about 0.5% of adults aged 16+ have been the victim of domestic violence at least once.

### ***Children in Need and Child Protection***

Most children are kept safe from abuse and harm. However, a relatively small number of children are known to be at risk. Children are supported in their homes wherever possible, and the level of child protection cases is now below that of our statistical neighbours. The exact prevalence of domestic violence is unclear, but reporting in Bedfordshire has improved in recent years.

An updated census in January 2008 showed almost 2,200 open cases for children's social care services in Bedfordshire.

At 31 March 2007, 110 children and young people under the age of 18 years were subject to a Child Protection Plan (CPP)\* in Bedfordshire. This equated to a rate 12 per 10,000 children in the local population, and compared with a rate of 20 among our statistical neighbour group.

In Bedfordshire there were 19.3 registrations per 10,000 population in the year ending 31 March 2007 (a total of 175 children in the year). This compared with an average of 24.5 for our statistical neighbours, including a high of 32.2 and a low of 13.1. (*Annual Performance Assessment, 2007*)

## **Section 11: Children – Making a Positive Contribution**

### ***Engage in Decision Making and Support the Community and the Environment***

We do not know to what extent young people are involved in decision-making beyond the choices they have at school (e.g. subject options and school council membership). However, most decisions about what children learn at school, when and how success is judged are still mainly taken by adults.

There has been an increase in the number of young people involved in electing members on to the Youth Cabinet.

There is national evidence of children volunteering with nearly half of 16-24's providing help within their communities.

### ***Law Abiding and Positive Behaviours***

Most young people participate in positive leisure activities, but nearly one in four do not. Over 4,000 are currently involved in the Duke of Edinburgh's Award Scheme.

Bedfordshire residents identify more activities for teenagers as a priority, and see groups of teenagers hanging around on the streets as one of the biggest problems, in terms of anti social behaviour.

Both the total number of pupils excluded and the total number of days lost by fixed term exclusions, has decreased in recent years.

The provisional data for 2006 indicates a rise in teenage conceptions from 2005 – 2006. This means that Bedfordshire is unlikely to meet the 2010 target to reduce teenage conceptions by 50% from the 1998 baseline. The problem seems to lie in Bedford Borough.

### ***Develop Positive Relationships and Choose not to Bully or Discriminate***

6% of boys in Year 10 thought that other children were fearful of going to school because of them.

### ***Self-confidence***

Over exposure to advertising in the media, and peer pressure to own the latest gadgets and fashions can lead to young people having feelings of inadequacy and low self esteem.

Children from disadvantaged backgrounds are less likely to develop important non-cognitive skills.

### ***Develop Enterprising Behaviour***

An increasing number of children are involved in Young Enterprise programmes which are running in Bedfordshire schools to give young people an insight into running a business.

## **Section 12: Economic Wellbeing**

### ***Ready for Employment***

Local employers have raised concerns about the literacy and numeracy skills of school leavers, as have business organisations nationally. The Bedfordshire and Luton Chamber of Commerce is committed to working with education and training providers to raise skill levels, and to improve the readiness of young people for the work environment.

Bedfordshire is expected to experience major employment growth to 2021 and beyond. This will create a wide range of employment opportunities for young people. There is a critical need to ensure that the careers advice given to young people, and the education and training programmes available to them, reflect these opportunities.

## References

BCC population estimates and forecasts 2008.

Bedfordshire PCT (prevalence)

Bedfordshire PCT (2007), Public Health Annual Report 2007/008, Issue 3)

ONS Mid Year Estimates 2007

Resident Population Estimates by Ethnic Group, All Persons, 2006

ONS, Vital Statistics 3, Mortality by cause)

Public Health Report, issue 3, Central Bedfordshire, March 2009)

The Balding Survey, Schools Health Education Unit (2006).

[www.dcsf.org.uk](http://www.dcsf.org.uk), Every Child Matters.)

---

**Meeting:** Children, Families and Learning Overview and Scrutiny Meeting  
**Date:** 6 October 2009  
**Subject:** Strategic Commissioning Framework for Children in Central Bedfordshire  
**Report of:** Deputy Chief Executive and Director of Children, Families and Learning  
**Summary:** The report provides Committee members with the opportunity to comment on the draft commissioning framework which will guide the work of the Children's Trust.

---

**Contact Officer:** Sylvia Gibson, Assistant Director, Policy, Planning and Commissioning  
**Public/Exempt:** Public  
**Wards Affected:** All  
**Function of:** Council

**RECOMMENDATIONS:**

- 1. that members are asked to consider and comment on the draft Strategic Commissioning Framework for Central Bedfordshire as part of the Children's Trust arrangements.**

**Background**

1. Commissioning is the process for deciding how to use the total resource available for children, young people and parents in order to improve outcomes in the most efficient, effective, equitable and sustained way. Commissioning is seen by the Government as key to delivering quality services, securing better outcomes and meeting budget pressures through Children's Trust arrangements.
2. The Children's Trust Board has the strategic responsibility to lead commissioning across the full range of services for children and young people.
3. The Children and Young People's Plan sets out the priorities agreed by the Children's Trust in Central Bedfordshire. The priorities will be shared by all agencies working with children and young people and will be delivered through joint planning and commissioning.

## The Strategic Commissioning Framework

4. The Strategic Commissioning Framework is designed to ensure that all Children's Trust partners have a shared understanding about how they will work together to commission services to meet the priorities for children and young people in Central Bedfordshire. The framework will be adopted by all agencies working with children and young people in Central Bedfordshire under the Children's Trust governance arrangements.
5. The Framework describes:
  - the key underpinning principles;
  - the commissioning standards;
  - the decision making processes;
  - the commissioning cycle; and
  - governance arrangements.
6. The detailed operational procedures will be drawn up by the Commissioning Executive of the Children's Trust which reports directly to the Children's Trust Board.
7. The Commissioning Executive will work to commissioning standards which provide a check list to ensure success. The standards will ensure that all those involved in commissioning have a clear understanding of the process and the mechanisms that underpin the framework.

## Conclusion and Next Steps

8. The Children's Trust Board adopted the Strategic Commissioning Framework for Central Bedfordshire at its meeting on 3 September 2009. Central Bedfordshire Council Executive will consider the Commissioning Framework on 10 November 2009.

<b>CORPORATE IMPLICATIONS</b>
<p><b>Council Priorities:</b> Commissioning will support the Central Bedfordshire Strategic Plan (2009-11) particularly in educating, protecting and providing opportunities for children and young people.</p> <p><b>Financial:</b> There is no immediate financial impact from the adoption of the Framework. However, whilst partnership working via Children's Trust arrangements has many benefits, as clearly stated in the Strategic Commissioning Framework, there are financial implications for Central Bedfordshire Council.</p>



- Central Bedfordshire's contribution versus the contribution made by other partners will need to be clearly spelt out, together with the budget implications for Central Bedfordshire. The Identification of resources required against set priorities is as stated in Appendix A item 4. Partnership working will deliver efficiencies in the long term, but there are likely to be ongoing financial and non financial costs and costs associated with initial set up. These will need to be clearly stated and budgeted for.
- Financial Governance arrangements and terms of reference will need to be clear to all partners as summarised in the Framework under Appendix A – 'Governance Arrangements of the Children's Trust and the Commissioning Function'. Central Bedfordshire Council, therefore, should be clear about how to measure and monitor the expected outcomes of this Strategic Framework to ensure optimum use of resources and value for money and value added.
- The case for pooled budgets and its benefits is clearly stated in Appendix A item 7. Whether a pooled or an aligned approach is adopted, the Trust framework must ensure that it has direct oversight of financial and budget matters supported by regular and robust monitoring and performance management systems. The process of dealing with overspends or underspends from one financial year to another will need to be clearly specified.

**Legal:**

The Strategic Commissioning Framework of the Children's Trust will support the Council and its partners in exercising the 'duty to co-operate' under section 10 of the Children Act 2004.

**Risk Management:**

The risks associated with weak commissioning are numerous and at a high level could lead to financial loss, an adverse reputational impact and could lead to a statutory breach or even loss of life. Implementing the Strategic Commissioning Framework will allocate the responsibility for a number of mitigating factors which should reduce the probability and impact of these risks occurring.

**Staffing (including Trades Unions):**

None.

**Equalities/Human Rights:**

The Commissioning principles commit the Trust to providing services in an equitable and inclusive way.

**Community Safety:**

Safeguarding is built into the commissioning standards.

**Sustainability:**

None

**Appendices:**

Appendix A – Strategic Commissioning Framework

This page is intentionally left blank

Appendix A

**Strategic Commissioning Framework  
Children and Young People in Central Bedfordshire**

**(Draft)**

**Vision and Values**

**Central Bedfordshire Children's Trust is committed to ensuring that all our children and young people have the best possible start in life. We will work together to provide high quality, accessible services that meet a universal offer for all and targeted support that meets local need and mitigates the impact of disadvantage.**

**Introduction**

Section 10 of the Children Act 2004 sets out duties requiring local authorities and their relevant partners to co-operate to improve the well being of children and young people against each of the five Every Child Matters outcomes. The Central Bedfordshire Children's Trust has been established to lead the work and drive forward inter-agency co-operation. The work of the Board and the structure that supports it must lead to the delivery of 'measurable improvements' and 'consistent, high quality arrangements to provide identification and early intervention for children and young people who need additional help'. This inter-agency co-operation extends into joint commissioning arrangements to secure the most appropriate, needs led, evidence based, value for money services for our local communities in Central Bedfordshire.

Commissioning is the process for deciding how to use the total resource available for children, young people and parents in order to improve outcomes in the most efficient, effective, equitable and sustainable way. It keeps the primary focus on the needs of service users and their carers, unclouded by the considerations of providers.

Commissioning sets out a framework for deciding how best to deploy resources strategically and tactically in order to achieve objectives, making best use of the strengths of the statutory, voluntary and private sectors. It encourages constructive dialogue between different stakeholders through a transparent process and helps to identify appropriate partner authorities or agencies with shared objectives.

Commissioning also makes the bridge between financial and service planning and aids the business planning of service providers by clarifying the medium-term purchasing intentions of the commissioning authority.

Most significantly, commissioning requires the Trust to share intelligence and analysis to improve the range, quality and cost-effectiveness of services within available resources, based on an understanding of whole systems of support.

Commissioning is at the very heart of providing effective services for both children and adults. It is the process by which the Trust decides how to spend its money to

get the best possible services for local people. Service users and carers, councillors, managers and staff at all levels in all agencies working with children, young people and their families need to contribute to this process to ensure that the services being provided are the best they can possibly be.

Commissioning is about enhancing the quality of life of service users and their carers by:

- having the vision and commitment to improve services
- connecting with the needs and aspirations of users and carers
- making the best use of all available resources
- understanding demand and supply
- linking financial planning and service planning
- making relationships and working in partnership
- anticipating future needs and expectations to plan for the future rather than just reacting to present demand.

The Strategic Commissioning Framework will ensure that all Children's Trust partners have a shared understanding about how we will work together to commission the services that are needed to fulfil our vision and meet the priorities for children and young people in Central Bedfordshire. The framework will be adopted by all agencies working with children and young people in Central Bedfordshire under the Children's Trust Board governance arrangements

The shared approach will ensure that we achieve the best outcomes for children and young people by using our combined resources to meet evidenced needs and planning for future developments, including the ability to be flexible and to move resources quickly and effectively to meet emerging needs.

The Children and Young People's Plan identifies the priorities for Central Bedfordshire, and commissioning arrangements will build on the strengths of local partners to deliver against these priorities. Strategic Commissioning is a key means by which the Children's Trust Board will make a reality of the duty to co-operate and drive cultural change.

The Children Trust Board partners will work closely together to ensure effective local leadership, governance, accountability and joint working, delivering improved outcomes to all children, young people and families based on shared action plans derived from the agreed priorities in the Children and Young People's Plan.

The funding and commissioning cycles of the Children's Trust Board partners will be aligned to provide coherence in delivering the CYPP. Areas of overlapping responsibility will be carefully planned. There will therefore be one overarching Commissioning Plan held by the Children's Trust which incorporates the commissioning from all partner agencies for children and young people, their families and carers.

For vulnerable children in particular, partners will co-ordinate services focusing on support for the family as a whole. Children's commissioning will therefore make appropriate arrangements with Adult services to ensure a seamless service for families.

This framework is the strategic guidance for partners and is not an operational manual on Commissioning. Shared operational processes and procedures will be developed once the Framework has been adopted

### **Purpose**

The purpose of this Strategic Commissioning Framework is to create clarity and consistency for partners in the Central Bedfordshire Children's Trust in securing the best outcomes for children, young people and their families who live, work and play in Central Bedfordshire.

### **Legislation and Statutory Guidance**

The following key documents set out the role of the Children's Trust and the view of Central Government in commissioning world class services for children, young people, their families and carers on which this Commissioning Framework is based:

- Every Child Matters
- National Service Framework for Children, Young People and Maternity Services
- Safeguarding Standards – Eastern Region
- Statutory Guidance on the Role of the Lead Member for Children's Services and the Director of Children's Services
- Strong Partnerships and Commissioning Governance within Children's Trusts
- Children's Trusts: Statutory Guidance on inter-agency co-operation to improve the well being of children, young people and their families
- Aiming High for Disabled Children
- Securing Better Health for Children and Young People through World Class Commissioning:

A bibliography of these and associated guidance can found in Appendix 1

### **The Central Bedfordshire Children's Trust Commissioning Principles:**

The principles that underpin the commissioning arrangements within the Children's Trust are designed to engage all partners in the commissioning process.

Commissioning decisions through the Children's Trust will:

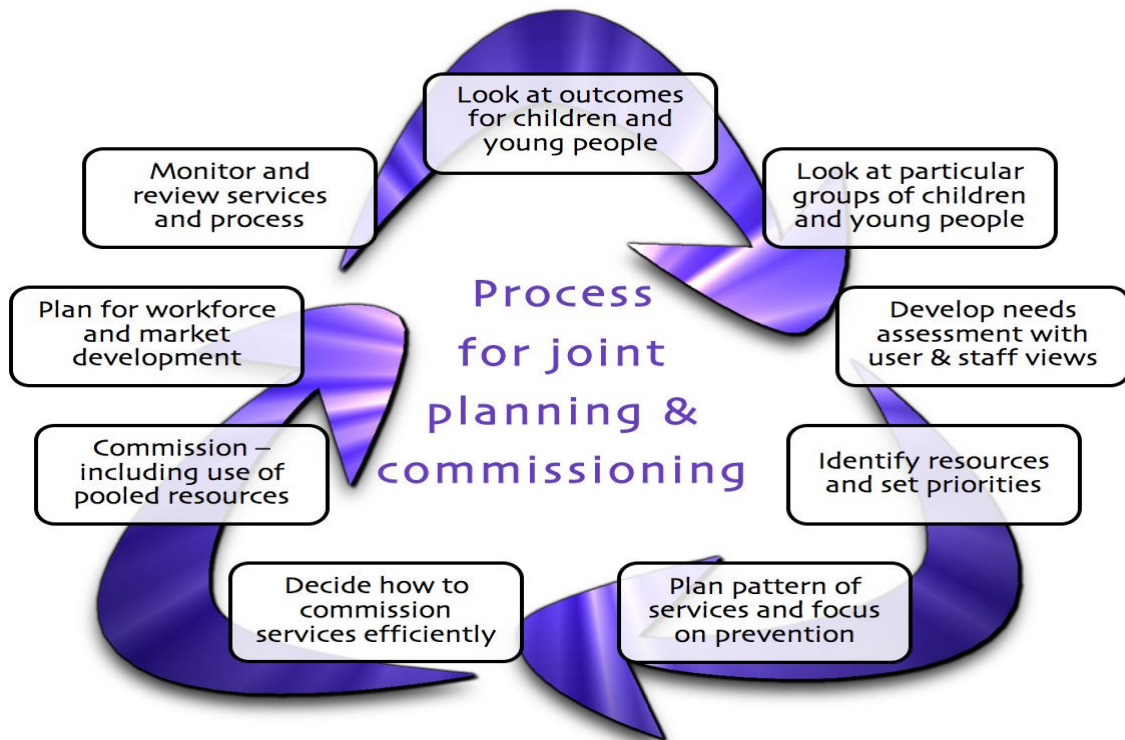
- be focused on the five Every Child Matters outcomes to be healthy, stay safe, enjoy and achieve, make a positive contribution and achieve economic wellbeing by aligning with the Children and Young People's Plan;

- particularly focus on the safeguarding of children to protect all children, specifically those in vulnerable groups;
- meet the national Children's Trust Statutory Guidance;
- work to the regional Safeguarding Standards for commissioning services from the Community and Voluntary Sector and any other relevant standards which may be developed that will enhance the service offered;
- align to the Commissioning model;
- be objective through the development of a Commissioning Executive which will provide an independent review and validation of all services for children, their families and carers;
- ensure that services are appropriate, needs led and value for money;
- empower children and their families and enable them to influence decisions about services;
- be responsive to the needs of individuals and localities within Central Bedfordshire and specifically on areas of most need;
- focus all agencies working with children and their families and carers on improving outcomes;
- improve market capacity which will have a direct positive impact on the local and regional economy;
- involve all partners and strengthen working relationships between all agencies through the use of flexible pooled resources;
- ensure delivery of services to achieve the local area agreement objectives and other performance measures contained within the Children and Young People Plan;
- identify opportunities to pool budgets to allow for the refocusing of commissioning based on any emerging needs of the local communities.

In order to meet these principles, the Central Bedfordshire Children's Trust Board partners will participate in joint planning, performance management, and pooled or aligned budget arrangements. The Children and Young People's Plan will underpin these arrangements

### **Commissioning Model**

Partners will work to a shared commissioning model to secure the right services in the right place at the right time. This is crucial to their commitment, ensures consistency and affords the opportunity to shift resources to earlier intervention where possible.



**Figure 1: DCSF Commissioning Cycle**

The commissioning model is a cyclical process, each element being fed by the one before and feeding into the next stage.

The nine step commissioning model has at its heart improved outcomes for all children and young people and narrowing the gap in outcomes between the general population and particular groups and individuals.

### **The Nine Step Commissioning Model**

#### **1. Look at outcomes for children and young people**

In applying the model the initial focus needs to be on the five Every Child Matters outcomes of be healthy, stay safe, enjoy and achieve, make a positive contribution and achieve economic wellbeing by aligning with the Children and Young People's Plan.

Each of the five Outcome Delivery Groups will be tasked with ensuring that these outcomes are achieved for all children in Central Bedfordshire irrespective of their home local authority area or the type of school they attend, including children who are electively home educated. This includes overseas pupils registered at any school in the local authority area. These responsibilities also extend to looked after children placed by another local authority in Central Bedfordshire.

## **2. Look at particular groups of children and young people**

The Joint Strategic Needs Assessment should provide the evidence for looking at the needs of particular groups of children and young people. This will be aligned with consultation with these particular groups to establish appropriate ways of meeting those needs through the commissioning of services locally and sub-regionally where appropriate.

Some individuals and specialist groups may need to link into very specialist services that can best be offered a resource that is shared across a number of Children's Trusts. Where these services are needed, we will work closely with sub-regional and regional partners to develop the market and offer children, young people and families services that are near to home, where appropriate.

Safeguarding children and young people will be at the core of all our commissioning decisions and arrangements and therefore this will be one of the standards by which the Board may decide to commission or de-commission services.

Inspection findings and recommendations will inform the Trust of services that will need to be further developed, including services for particular groups of children and young people.

Commissioning decisions will deliver accessible, equitable, inclusive and non-discriminatory services.

## **3. Develop the needs assessment with user and staff views**

The Children's Trust Board identifies resources and sets priorities against a robust needs analysis. The needs analysis includes data from:

- Children and Young People Plan
- Joint Strategic Needs Assessment
- Local Area Agreement Indicators
- Inspection findings and recommendations
- Sustainable Communities Strategy
- Statutory and local policies and targets of partners
- User and staff views.

The needs analysis will be set against the map of resources across Central Bedfordshire Trust partners. From this we will identify where services may overlap and where there may be gaps in provision. By realigning resources against needs and strategic priorities we will deliver the right level of service into the right areas.

## **4. Identify resources and set priorities**

Resources include;

- Local public, private and commercial sectors and Third Sector providers;



- The full range of resources – workforce, buildings, activities, revenue and capital funding streams, parents and communities;
- Opportunities to bid for new funding initiatives against strategic priorities.

Where services do not exist, we will undertake market analysis and seek to develop local market opportunities. Where specialist services are needed we will develop strong partnership arrangements with sub-regional and regional partners.

The Children's Trust will set its strategic direction through the agreement of the Children and Young People's Plan based on clear needs analysis of the current, and anticipated future needs of families, localities and themes and taking into account the diversity of the local populations. This will be refreshed annually to reflect current or emerging needs for the following year.

## **5. Plan the pattern of services and focus on prevention**

Central Bedfordshire Children's Trust is developing locally based, integrated services which will:

- focus on delivering a core service offer to children, young people and families in the context of their communities;
- reduce duplication by integrating services and streamlining processes;
- improve and strengthen work with vulnerable individuals and groups;
- develop an evidence base of what works and what is efficient and effective.

The Children's Trust recognises the need to ensure that preventative, early intervention services are in place to support families at an early stage and minimise the risk of situations escalating. The focus on prevention will include integrated planning, design and delivery through multi agency teams which will include public, third sector and private agencies.

## **6. Decide how to commission services effectively**

Decisions will take into account the need to ensure sustainability and to build capacity where appropriate, including considering service re-design to support delivery. This may include commissioning services where previously they were delivered in-house by one or more agencies, or de-commissioning services which are not providing the desired outcomes.

The aim of the decisions is to provide world class commissioning and world class services. This means that services delivered for children, young people and their families and carers locally will be aligned with those experienced in the highest-performing countries in the world.

The commissioning process will empower children, young people, families and communities by reflecting their views on the service and developing ways in which service users can take a full part in developing commissioning arrangements. Decisions made within the Commissioning Executive will from time to time be hard to make but should be driven by the needs of children, their families and carers as the primary focus.

We will work with the relevant Procurement teams and develop the commissioning function in line with department for Communities and Local Government guidance for Procurement of Care and Support Services.

### **7. Commission – including the use of pooled resources**

Pooled or aligned budgets should underpin commissioning to ensure that the resources are available to redesign services and encourage innovative approaches.

Decisions will be based on “wrap around” services that are centred on the needs of the child or young person and their family and will need to break through service barriers and use budgets flexibly.

Pooled budgets can offer a number of benefits, including,

- underpinning partnership arrangements with a clear legal agreement;
- encouraging thinking that is independent of any traditions, vested interests and ways of working that might have existed in the past, and identifying any overlaps in services;
- encouraging innovative and user-focused service design to reduce the transaction costs, overheads, bureaucracy and delay involved in accessing a number of separate funding streams and which is particularly helpful for children and young people with multiple needs.

### **8. Plan for workforce and market development**

The Children’s Trust will develop a strong understanding of the strengths, weaknesses and gaps in the skills and competencies of all the local children’s workforce. Working together in multi agency teams we will make best use of the skills within the teams. Through market analysis we will identify the gaps and seek to identify and develop the market.

### **9. Monitor and review services and process**

The Commissioning Executive will ensure that services, both in house and externally provided, offer value for money and good quality provision.

Regular and robust monitoring arrangements will be in place to ensure that specific commissioning decisions lead to the achievement of clearly identified outcomes within specific timescales.

The Commissioning Framework will be supported by a common approach to drawing up service specifications, partnership agreements and service level agreements. We will have a common approach to procurement and contracting based on a shared commitment from all partners to ensure safe, high quality services to all children and young people in Central Bedfordshire.

We recognise that, over time, local and national priorities and the capacity of the market to respond to these priorities may change. As part of the ongoing performance monitoring, there will be a need to identify the potential for managing the market.

The commissioning cycle applies to in house teams, other public sector organisations, the third or private sectors, or a combination of these. Mechanisms will be developed for Commissioners to hold the in-house provider function to account for delivery.

The Commissioning Executive will establish sub groups as required to ensure a strong focus on needs analysis, performance improvement, quality assurance, and pooled and aligned resources. These groups will give clear guidance on what the needs of the local population are and where the Executive may wish to focus their strategic direction for the coming year. The terms of reference for these groups will be developed by the Commissioning Executive.

### **Commissioning Standards – Ensuring Quality**

The commissioning standards provide a check list to ensure success. Each standard will be set against success criteria and form part of the monitoring arrangements. The standards ensure that all those involved in commissioning have a clear understanding of the process and the mechanisms that underpin the framework and provide the basis for healthy dialogue and challenge between commissioners and providers.

1. Partners agree to a shared vision, strategic objectives, priorities and values.
2. The Children's Trust Board has clear accountability and governance arrangements.
3. Safeguarding children and young people is at the core of our commissioning decisions and arrangements.
4. A strategic needs assessment is undertaken and a regular review cycle established.
4. Children, young people, parents and carers have meaningful involvement in the planning and delivery of services.
5. The commissioning framework is accessible and actively promoted to all partners, stakeholders and service users.
6. Prioritisation and decision making processes are transparent.
7. Commissioning processes to identify "preferred providers" are based on clear and transparent decisions.
9. Contracting mechanisms and risk sharing arrangements are implemented.

10. Strong contractual procedures are in place, with full monitoring arrangements.
11. All partners are able to engage with an effective performance framework.
12. Clear quality and clinical governance processes are in place.
13. Clarity exists on the roles and remits of commissioners and providers.
14. Provider development and market development are undertaken to increase the choice and diversity of available services.

Evidence that these standards are being met will be reviewed regularly by the Commissioning Executive with the support of the Outcome Delivery Groups and the Commissioning Executive's sub groups.

### **Governance Arrangements of the Children's Trust and the Commissioning Function**

The Children's Trust Board requires governance arrangements which give clear direction, delegation, resourcing and accountability to the commissioning arrangements. The Children's Trust Board agrees the terms of reference for the sub-groups and the roles and responsibilities of partners within the Trust.

The Children's Trust Board has the strategic responsibility to lead commissioning across the full range of services for children and therefore the terms of reference will be made explicit about the roles and responsibilities of different partners and how decisions are made. This is particularly important in relation to pooled budgets and how formal decisions will be taken where expenditure is above the level of delegated authority for those sitting on the Board.

It is the expectation of the Children's Trust Board that people who represent each of the partner organisations is of a sufficient seniority to make the relevant commissioning decisions in order to prevent unnecessary delays. Agencies should therefore ensure that those representatives have the delegated authority to make those decisions.

All members of the Children's Trust are asked to use their experience of children, their families and carers to act in their best interests rather than in the interests of their particular organisation.

### **The Children's Trust Board**

The Children's Trust Board is the Executive of the Trust. The plans, strategies and priorities of the Trust are developed by the Every Child Matters Delivery Groups. These are recommended to the Trust Board which then ensures that the Trust maintains a coherent strategic direction that reflects the priorities of the Trust and the needs of children and young people in the area.

The Trust Board operates as a Thematic Partnership of the Central Bedfordshire Local Strategic Partnership (LSP). It will make recommendations to the LSP Board on key priorities relating to Children and Young People and the level of improvement required, and will report progress in achieving this. The Trust Board will contribute to the development and refresh of the Sustainable Community Strategy and support the development and refresh of the Local Area Agreement. These arrangements are set out in Appendix 2.

A key function of the Commissioning Executive is to implement the strategy for strategic commissioning as part of the Children and Young People's Plan, based on the shared priorities of the partnership and designed to address the needs of children and young people in Central Bedfordshire. The Terms of Reference for the Commissioning Executive are set out in Appendix 3.

### **The Role of Local Authority Overview and Scrutiny Committee**

Under the statutory guidance 2009,

"...overview and scrutiny committee may review or scrutinise decisions made or actions taken in connection with the discharge of functions which are the responsibility of the Executive, including the delivery of children's services and all aspects of the work of the children's partnerships. In doing so, the committee can require the Lead Member to attend or answer questions on matters relating to children or young people in the area, covering the full range of services for children, not just those commissioned or provided by the local authority itself. This provides a means of ensuring strong local scrutiny for the delivery of local public services, including local authority children's services and health."<sup>1</sup>

Central Bedfordshire Council's Children Families and Learning Overview and Scrutiny Committee will from time to time look at aspects of the Children and Young People's Plan and may scrutinise performance, budget and commissioning arrangements as part of that function, calling all partners to account for their role in the delivery of local services.

### **Conclusion**

The Strategic Commissioning Framework provides an overarching strategy for the development of commissioning arrangements in Central Bedfordshire. The detailed arrangements to ensure a common approach will be developed through the Commissioning Executive. This group will comprise commissioners from the relevant partners. This group will ensure that there is a Commissioning Plan which is underpinned by the principles, standards and intentions in the Framework and which reports to the Central Bedfordshire Children's Trust Board.

---

<sup>1</sup> Statutory Guidance: The Roles and Responsibilities of Lead Member for Children's Services and the Director of Children's Services, DCSF 2009

## Appendix 1

### Central Bedfordshire Strategic Commissioning Framework

#### Bibliography:

The Children's Commissioning Framework draws upon a range of legislation and guidance from the Department of Children, Schools and Families and the Department of Health and best practice guidance and a literature review. All resources and legislation cited in the Children's Commissioning Framework can be found on the Every Child Matters Website [www.everychildmatters.gov.uk/resources-and-practice](http://www.everychildmatters.gov.uk/resources-and-practice) or on The Commissioning Support Programme website at [www.commissioningsupport.org.uk](http://www.commissioningsupport.org.uk)

***Every Child Matters.*** Department for Education and Skills (DfES) 2004

***Joint Planning and Commissioning Framework for Children, Young People and Maternity Services*** – HM Government 2005

***Working Together to Safeguard Children.*** A guide to inter-agency working to safeguard and promote the welfare of children. HM Government 2006

***Safeguarding Standards*** – Government Office Eastern Region 2009

***Children's Trusts:*** Statutory guidance on inter-agency cooperation to improve well-being of children, young people and their families. Department for Children Schools and Families, (DCSF) 2008

***Statutory Guidance on the Role of the Lead Member for Children's Services and the Director of Children's Services*** – DCSF 2009

***Strong Partnerships and Commissioning Governance within Children's Trusts:*** Statutory Guidance on inter-agency co-operation to improve well being of children, young people and their families. DCSF 2008

***Aiming High for Disabled Children; better support for families.*** Department for Education and Skills and HM Treasury 2007

***Securing Better Health for Children and Young People through World Class Commissioning:*** Department of Health (DH) 2009

***Children and Young People's Plan Guidance.*** DCSF 2009

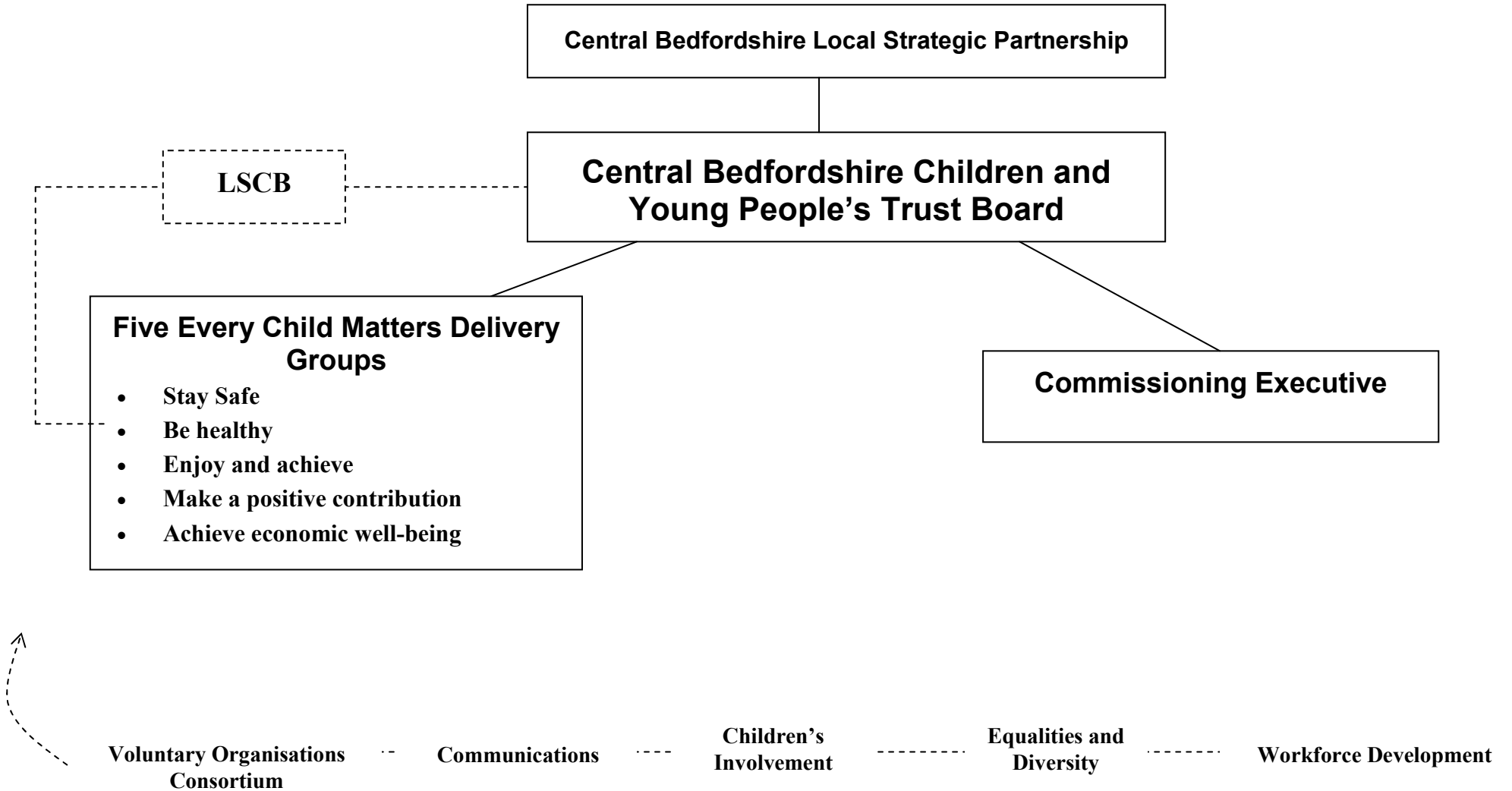
***The New Performance Framework for Local Authority and Local Partnerships.*** Set of Single Indicators. Department for Communities and Local Government, 2007

***Joint Working between Housing and Children's Services.*** DCSF 2008

***Achieving Better Outcomes;*** Commissioning in Children's Services. Commissioning Support Programme 2009

***Healthy Lives, Brighter Futures.*** Joint guidance on improving outcomes for children and young people. DCAF and DH 2009

### Arrangements for Central Bedfordshire Children and Young People's Trust



## **Appendix 3**

### **Extract from the Central Bedfordshire Children's Trust Agreement**

#### **The Commissioning Executive**

##### **Role**

1. The role of the Commissioning Executive is to direct the shared resources of the Trust towards the priorities agreed by partners as outlined in the Children and Young People's Plan.

##### **Membership**

2. The Commissioning Executive will be made up of the leads for commissioning from across all partner agencies best placed to deliver change and direct resources to meet the shared priorities of the Children and Young People's Plan.

##### **Decision Making**

3. The Commissioning Executive will operate on the basis of the consensus achieved through consultations with partners and amongst those members attending the meeting. Funding decisions will always be dependent on agreement by partner agencies using their own internal procedures.
4. Key strategic decisions will be referred for final agreement by the Trust Board.

##### **Frequency of meetings**

5. Meetings will take place on a quarterly basis.



---

**Meeting:** Children Families and Learning, Overview and Scrutiny Meeting

**Date:** 6 October 2009

**Subject:** Monitoring Quarterly Performance

**Report of:** Deputy Chief Executive and Director of Children, Families and Learning

**Summary:** The report provides members with performance information in relation to Children, Families and Learning so that the Committee can take a view on what performance information they would like to scrutinise on a quarterly basis.

---

**Contact Officer:** Sylvia Gibson, Interim Assistant Director, Policy, Planning and Commissioning

**Public/Exempt:** Public

**Wards Affected:** All

**Function of:** Council

#### **RECOMMENDATIONS:**

- 1. that members consider the range of performance information collected and monitored by the Children, Families and Learning Directorate**
- 2. that members decide what performance information they would like to scrutinise on a quarterly basis**
- 3. that members review the Quarter 1 performance information.**

#### **Background**

1. Central Bedfordshire Council's vision is to improve the quality of life of all in Central Bedfordshire, and enhance the unique character of our communities and our environment. In order to deliver this vision the Council has agreed the following five priorities which are set out in the Strategic Plan:
  - Supporting and caring for an ageing population
  - Educating, protecting and providing opportunities for children and young people
  - Managing growth effectively
  - Creating safer communities
  - Promoting healthier lifestyles

2. In the Children, Families and Learning Directorate Plan the following key challenges and priorities have been identified:
  - a. Reduce the health inequalities of children and families in Central Bedfordshire.
  - b. Embed and ensure a multi-agency approach to safeguarding practices across Central Bedfordshire.
  - c. Develop integrated, locality service planning, decision making and service delivery.
  - d. Raise Educational Achievement and improve children's assessment outcomes and examination results at age 11 and 16 Increase young people's participation in positive activities.
  - e. Increase the number of young people in employment, education or training.
  - f. Reduce the number of First Time Entrants and the Proven Rate of Reoffending.
  - g. Deliver services that represent value for money and drive efficiencies.
3. The Directorate Plan was developed in the run up to the establishment of the new authority and it provided the framework for the review of the first quarter's performance. Now that the Children and Young People's Plan has been adopted this will drive the priorities for the Children, Families and Learning Directorate and will provide the framework for reviewing performance in quarter two.

### **Monitoring progress against priorities**

4. Children, Families and Learning (CFL) is responsible for delivering a wide range of services and for collecting and reporting against 69 indicators from the National Indicator Set (See Appendix A – Indicators that CFL collects and monitors showing Assistant Director responsibility).
5. In order to monitor progress against delivering the above priorities in the CFL Directorate Plan, CFL Management Team has identified a basket of critical indicators taken from the National Indicator Set to monitor quarterly. At the end of the first quarter the developing basket of critical indicators included those indicators in Appendix B. Further work is being done to extend the basket of indicators to include those from Community and Cultural Learning.

6. Quarter one performance was collected and reviewed against this set of critical indicators at the end of July 2009 and this performance and commentary are attached at Appendix C. Members will note that where information is not collected quarterly, in particular for a number of Local Area Agreement Indicators, a commentary is provided by the Assistant Director Lead. This commentary sets out progress based on inputs and outputs from delivery plans and states the likelihood of achieving quarterly or annual targets.
7. It was not possible to present quarter one information to this Committee due to the arrangements and timescales for setting up new Overview and Scrutiny Committees and the need to align our reporting of performance management across the Council. Members will be aware that performance has moved on since this first report was produced and performance for quarter two is due to be presented to this Committee for scrutiny on the 3 November 2009.

### Conclusion and Next Steps

8. Members are asked to consider the national indicators that Children Families and Learning are responsible for as set out in the National Indicator Set (Appendix A) and identify those that they would wish to review and scrutinise on a regular quarterly basis.

<b>CORPORATE IMPLICATIONS</b>
<p><b>Council Priorities:</b></p> <p>The recommendations in this report provide Committee Members with an opportunity to scrutinise the performance of the authority to ensure they support the delivery of the following Council Priorities:</p> <ul style="list-style-type: none"> <li>• Educating, protecting and providing opportunities for children and young people</li> <li>• Creating safer communities</li> <li>• Promoting healthier lifestyles</li> </ul> <p>It will also provide members with an opportunity to influence how they scrutinise future performance against the Children and Young People's Plan and the priorities within that plan.</p> <p><b>Financial:</b></p> <p>None</p> <p><b>Legal:</b></p> <p>None</p> <p><b>Risk Management:</b></p> <p>None</p> <p><b>Staffing (including Trades Unions):</b></p>

None

**Equalities/Human Rights:**

None

**Community Safety:**

None

**Sustainability:**

None

**Appendices:**

Appendix A – National Indicator Set

Appendix B – Basket of critical indicators monitored quarterly by CFL Management Team

Appendix C – Quarter 1 performance of critical indicators

Appendix A

National Indicator Ref	Description	Local Area Agreement Indicator	Indicators that CFL collects and monitors (Assitant Director responsibility)	Indicators that CFL Mgt Team monitor quarterly
NI 1	NI 1 % of people who believe people from different backgrounds get on well together in their local area PSA 21			
NI 2	NI 2 % of people who feel that they belong to their neighbourhood PSA 21			
NI 3	NI 3 Civic participation in the local area PSA 15	LAA		
NI 4	NI 4 % of people who feel they can influence decisions in their locality PSA 21	LAA		
NI 5	NI 5 Overall / general satisfaction with local area CLG DSO			
NI 6	NI 6 Participation in regular volunteering CO DSO	LAA Local Indicator		
NI 7	NI 7 Environment for a thriving third sector CO DSO	LAA Local Indicator		
NI 8	NI 8 Adult participation in sport DCMS DSO	LAA	Roy Waterfield	Yes
NI 9	NI 9 Use of public libraries DCMS DSO		Roy Waterfield	
NI 10	NI 10 Visits to museums or galleries DCMS DSO		Roy Waterfield	
NI 11	NI 11 Engagement in the arts DCMS DSO	LAA Local Indicator	Roy Waterfield	Yes
NI 12	NI 12 Refused and deferred Houses in Multiple Occupation (HMO) license applications leading to immigration enforcement activity HO DSO	Deleted from national set.		
NI 13	NI 13 Migrants English language skills and knowledge HO DSO			
NI 14	NI 14 Avoidable contact: The average number, of customer contacts per resolved customer requests			
NI 15	NI 15 Serious violent crime rate PSA 23			
NI 16	NI 16 Serious acquisitive crime rate PSA 23	LAA		
NI 17	NI 17 Perceptions of anti-social behaviour PSA 23			
NI 18	NI 18 Adult re-offending rates for those under probation supervision PSA 23			
NI 19	NI 19 Rate of proven re-offending by young offenders PSA 23			
NI 20	NI 20 Assault with injury crime rate PSA 25		Glen Denham	Yes
NI 21	NI 21 Dealing with local concerns about anti-social behaviour and crime by the local council and police PSA 23			
NI 22	NI 22 Perceptions of parents taking responsibility for the behaviour of their children in the area HO DSO		Glen Denham and Patrick Shevlin	
NI 23	NI 23 Perceptions that people in the area treat one another with respect and dignity HO DSO			
NI 24	NI 24 Satisfaction with the way the police and local council dealt with anti-social behaviour HO DSO	Deleted from national set.		
NI 25	NI 25 Satisfaction of different groups with the way the police and local council dealt with anti-social behaviour HO DSO	Deleted from national set.		
NI 26	NI 26 Specialist support to victims of a serious sexual offence PSA 23			
NI 27	NI 27 Understanding of local concerns about anti-social behaviour and crime by the local council and police HO DSO			
NI 28	NI 28 Serious knife crime rate HO DSO			
NI 29	NI 29 Gun crime rate PSA 23			
NI 30	NI 30 Re-offending rate of prolific and priority offenders	LAA		

National Indicator Ref	Description	Local Area Agreement Indicator	Indicators that CFL collects and monitors (Assitant Director responsibility)	Indicators that CFL Mgt Team monitor quarterly
NI 31	Re-offending rate of registered sex offenders PSA 23			
NI 32	Repeat incidents of domestic violence PSA 23	LAA		
NI 33	Arson incidents HO DSO			
NI 34	Domestic violence - murder PSA 23			
NI 35	Building resilience to violent extremism PSA 26			
NI 36	Protection against terrorist attack PSA 26			
NI 37	Awareness of civil protection arrangements in the local area CO DSO			
NI 38	Drug-related (Class A) offending rate PSA 25			
NI 39	Alcohol-harm related hospital admission rates PSA 25			
NI 40	Drug users in effective treatment PSA 25	LAA		
NI 41	Perceptions of drunk or rowdy behaviour as a problem PSA 25			
NI 42	Perceptions of drug use or drug dealing as a problem PSA 25			
NI 43	Young people within the Youth Justice System receiving a conviction in court who are sentenced to custody MoJ DSO		Glen Denham	
NI 44	Ethnic composition of offenders on Youth Justice System disposals MoJ DSO		Glen Denham	
NI 45	Young offenders engagement in suitable education, employment or training MoJ DSO		Glen Denham	
NI 46	Young offenders access to suitable accommodation MoJ DSO		Glen Denham	
NI 47	People killed or seriously injured in road traffic accidents DfT DSO			
NI 48	Children killed or seriously injured in road traffic accidents DfT DSO			
NI 49	Number of primary fires and related fatalities and non-fatal casualties, excluding precautionary checks CLG DSO			
NI 50	Emotional health of children PSA 12		Martin Pratt	
NI 51	Effectiveness of child and adolescent mental health (CAMHs) services DCSF DSO	LAA	Martin Pratt	Yes
NI 52	Take up of school lunches PSA 12		Patrick Shevlin	
NI 53	Prevalence of breastfeeding at 6 - 8 weeks from birth PSA 12			
NI 54	Services for disabled children PSA 12		Martin Pratt	
NI 55	Obesity among primary school age children in Reception Year DCSF DSO			
NI 56	Obesity among primary school age children in Year 6 DCSF DSO	LAA	Martin Pratt	Yes
NI 57	Children and young people's participation in high-quality PE and sport DCSF DSO		Patrick Shevlin	Yes
NI 58	Emotional and behavioural health of children in care DCSF DSO		Martin Pratt	Yes
NI 59	Initial assessments for children's social care carried out within 7 working days of referral DCSF DSO 2		Martin Pratt	Yes
NI 60	Core assessments for children's social care that were carried out within 35 working days of their commencement DCSF DSO		Martin Pratt	Yes
NI 61	Timeliness of placements of looked after children for adoption following an agency decision that the child should be placed for adoption DCSF DSO		Martin Pratt	
NI 62	Stability of placements of looked after children: number of moves DCSF DSO		Martin Pratt	Yes
NI 63	Stability of placements of looked after children: length of placement DCSF DSO		Martin Pratt	Yes

National Indicator Ref	Description	Local Area Agreement Indicator	Indicators that CFL collects and monitors (Assitant Director responsibility)	Indicators that CFL Mgt Team monitor quarterly
NI 64	NI 64 Child protection plans lasting 2 years or more DCSF DSO		Martin Pratt	Yes
NI 65	NI 65 Children becoming the subject of a Child Protection Plan for a second or subsequent time DCSF DSO		Martin Pratt	Yes
NI 66	NI 66 Looked after children cases which were reviewed within required timescales DCSF DSO		Martin Pratt	Yes
NI 67	NI 67 Child protection cases which were reviewed within required timescales DCSF DSO		Martin Pratt	Yes
NI 68	NI 68 Referrals to children's social care going on to initial assessment DCSF DSO		Martin Pratt	Yes
NI 69	NI 69 Children who have experienced bullying DCSF DSO			
NI 70	NI 70 Hospital admissions caused by unintentional and deliberate injuries to children and young people DCSF DSO			
NI 71	NI 71 Children who are Missing from Home or Care DCSF DSO			
NI 72	NI 72 Achievement of at least 78 points across the Early Years Foundation Stage with at least 6 in each of the scales in Personal Social and Emotional Development and Communication, Language and Literacy PSA 10		Patrick Shevlin	
NI 73	NI 73 Achievement at level 4 or above in both English and Maths at Key Stage 2 (Threshold) PSA 10		Patrick Shevlin	Yes
NI 74	NI 74 Achievement at level 5 or above in both English and Maths at Key Stage 3 (Threshold) PSA 10	Deleted from national set.		
NI 75	NI 75 Achievement of 5 or more A*-C grades at GCSE or equivalent including English and Maths (Threshold) PSA 10		Patrick Shevlin	Yes
NI 76	NI 76 Achievement at level 4 or above in both English and Maths at KS2 (Floor) DCSF DSO		Patrick Shevlin	
NI 77	NI 77 Achievement at level 5 or above in both English and Maths at KS3 (Floor) DCSF DSO	Deleted from national set.	Patrick Shevlin	
NI 78	NI 78: Reduction in number of schools where fewer than 30% of pupils achieve 5 or more A*- C grades at GCSE and equivalent including GCSEs in English and Maths		Patrick Shevlin	
NI 79	NI 79 Achievement of a Level 2 qualification by the age of 19 PSA 10		Patrick Shevlin	
NI 80	NI 80 Achievement of a Level 3 qualification by the age of 19 PSA 10		Patrick Shevlin	
NI 81	NI 81 Inequality gap in the achievement of a Level 3 qualification by the age of 19 DCSF DSO		Patrick Shevlin	
NI 82	NI 82 Inequality gap in the achievement of a Level 2 qualification by the age of 19 DCSF DSO		Patrick Shevlin	
NI 83	NI 83 Achievement at level 5 or above in Science at Key Stage 3 DCSF DSO	Deleted from national set.		
NI 84	NI 84 Achievement of 2 or more A*-C grades in Science GCSEs or equivalent DCSF DSO		Patrick Shevlin	
NI 85	NI 85 Post-16 participation in physical sciences (A Level Physics, Chemistry and Maths) DCSF DSO		Patrick Shevlin	
NI 86	NI 86 Secondary schools judged as having good or outstanding standards of behaviour DCSF DSO		Patrick Shevlin	
NI 87	NI 87 Secondary school persistent absence rate DCSF DSO		Glen Denham	Yes
NI 88	NI 88 Percentage of schools providing access to extended services DCSF DSO		Glen Denham	Yes
NI 89	NI 89 : (a)Reduction of number of schools judged as requiring special measures and (b) improvement in time taken to come out of the category DCSF DSO		Patrick Shevlin	Yes
NI 90	NI 90 Take up of 14-19 learning diplomas DCSF DSO		Patrick Shevlin	
NI 91	NI 91 Participation of 17 year-olds in education or training DCSF DSO		Patrick Shevlin	

National Indicator Ref	Description	Local Area Agreement Indicator	Indicators that CFL collects and monitors (Assitant Director responsibility)	Indicators that CFL Mgt Team monitor quarterly
NI 92	NI 92 Narrowing the gap between the lowest achieving 20% in the Early Years Foundation Stage Profile and the rest PSA 11		Patrick Shevlin	
NI 93	NI 93 Progression by 2 levels in English between Key Stage 1 and Key Stage 2 PSA 11		Patrick Shevlin	
NI 94	NI 94 Progression by 2 levels in Maths between Key Stage 1 and Key Stage 2 PSA 11		Patrick Shevlin	
NI 95	NI 95 Progression by 2 levels in English between Key Stage 2 and Key Stage 3 PSA 11	Deleted from national set.		
NI 96	NI 96 Progression by 2 levels in Maths between Key Stage 2 and Key Stage 3 PSA 11	Deleted from national set.		
NI 97	NI 97 Progression by 2 levels in English between Key Stage 3 and Key Stage 4 PSA 11	Deleted from national set.		
NI 98	NI 98 Progression by 2 levels in Maths between Key Stage 3 and Key Stage 4 PSA 11	Deleted from national set.		
NI 99	NI 99 Children in care reaching level 4 in English at Key Stage 2 PSA 11		Patrick Shevlin	Yes
NI 100	NI 100 Children in care reaching level 4 in Maths at Key Stage 2 PSA 11		Patrick Shevlin	Yes
NI 101	NI 101 Children in care achieving 5 A*-C GCSEs (or equivalent) at Key Stage 4 (including English and Maths) PSA11		Patrick Shevlin	Yes
NI 102	NI 102 Achievement gap between pupils eligible for free school meals and their peers achieving the expected level at Key stages 2 and 4 PSA11		Patrick Shevlin	
NI 103	NI 103 Special Educational Needs - statements issued within 26 weeks (a) excluding exceptions (b) including exceptionsDCSF DSO		Martin Pratt	Yes
NI 104	NI 104 The Special Educational Needs (SEN)/non- SEN gap - achieving Key Stage 2 English and Maths threshold DCSF DSO		Patrick Shevlin	
NI 105	NI 105 The Special Educational Needs (SEN)/non-SEN gap - achieving 5 A*-C GCSE inc. English and Maths DCSF DSO		Patrick Shevlin	
NI 106	NI 106 Young people from low income backgrounds progressing to higher education PSA11		Patrick Shevlin	
NI 107	NI 107 Key Stage 2 attainment for Black and minority ethnic groups DCSF DSO		Patrick Shevlin	
NI 108	NI 108 Key Stage 4 attainment for Black and minority ethnic groups DCSF DSO		Patrick Shevlin	
NI 109	NI 109 Delivery of Sure Start Children CentresDCSF DSO		Glen Denham	
NI 110	NI 110 Young people's participation in positive activities PSA 14	LAA	Glen Denham	Yes
NI 111	NI 111 First time entrants to the Youth Justice System aged 10 – 17 PSA 14		Glen Denham	Yes
NI 112	NI 112 Under 18 conception rate PSA 14			
NI 113	NI 113 Prevalence of Chlamydia in under 20 year olds DCSF DSO			
NI 114	NI 114 Rate of permanent exclusions from school DCSF DSO		Patrick Shevlin	Yes
NI 115	NI 115 Substance misuse by young people PSA 14	LAA	Glen Denham	Yes
NI 116	NI 116 Proportion of children in poverty PSA 9	LAA Local Indicator	Glen Denham	Yes
NI 117	NI 117 16 to 18 year olds who are not in education, training or employment (NEET) PSA 14	LAA	Glen Denham	Yes
NI 118	NI 118 Take up of formal childcare by low-income working families DWP DSO			
NI 119	NI 119 Self-reported measure of people's overall health and wellbeing DH DSO			



National Indicator Ref	Description	Local Area Agreement Indicator	Indicators that CFL collects and monitors (Assitant Director responsibility)	Indicators that CFL Mgt Team monitor quarterly
NI 120	NI 120 All-age all cause mortality rate PSA 18	LAA		
NI 121	NI 121 Mortality rate from all circulatory diseases at ages under 75 DH DSO			
NI 122	NI 122 Mortality from all cancers at ages under 75 DH DSO			
NI 123	NI 123 16+ current smoking rate prevalence PSA 18	LAA		
NI 124	NI 124 People with a long-term condition supported to be independent and in control of their condition DH DSO			
NI 125	NI 125 Achieving independence for older people through rehabilitation/intermediate care PSA 18			
NI 126	NI 126 Early access for women to maternity services PSA 19			
NI 127	NI 127 Self reported experience of social care users PSA 19			
NI 128	NI 128 User reported measure of respect and dignity in their treatment DH DSO			
NI 129	NI 129 End of life access to palliative care enabling people to choose to die at home DH DSO			
NI 130	NI 130 Social Care clients receiving Self Directed Support (Direct Payments and Individual Budgets) DH DSO	LAA		
NI 131	NI 131 Delayed transfers of care from hospitals DH DSO			
NI 132	NI 132 Timeliness of social care assessment DH DSO			
NI 133	NI 133 Timeliness of social care packages DH DSO			
NI 134	NI 134 The number of emergency bed days per head of weighted population DH DSO			
NI 135	NI 135 Carers receiving needs assessment or review and a specific carer's service, or advice and information DH DSO	LAA Local Indicator		
NI 136	NI 136 People supported to live independently through social services (all ages) PSA 18			
NI 137	NI 137 Healthy life expectancy at age 65 PSA 17			
NI 138	NI 138 Satisfaction of people over 65 with both home and neighbourhood PSA 17			
NI 139	NI 139 People over 65 who say that they receive the information, assistance and support needed to exercise choice and control to live independently PSA 17			
NI 140	NI 140 Fair treatment by local services PSA 15			
NI 141	NI 141 Number of vulnerable people achieving independent living CLG DSO	LAA		
NI 142	NI 142 Number of vulnerable people who are supported to maintain independent living PSA 17	LAA Local Indicator		
NI 143	NI 143 Offenders under probation supervision living in settled and suitable accommodation at the end of their order or licence PSA 16			
NI 144	NI 144 Offenders under probation supervision in employment at the end of their order or licence PSA 16			
NI 145	NI 145 Adults with learning disabilities in settled accommodation PSA 16			
NI 146	NI 146 Adults with learning disabilities in employment PSA 16			
NI 147	NI 147 Care leavers in suitable accommodation PSA 16			
NI 148	NI 148 Care leavers in employment, education or training PSA 16	Martin Pratt	Martin Pratt	Yes
NI 149	NI 149 Adults in contact with secondary mental health services in settled accommodation PSA 16			
NI 150	NI 150 Adults in contact with secondary mental health services in employment PSA 16			
NI 151	NI 151 Overall employment rate PSA 7&8			

National Indicator Ref	Description	Local Area Agreement Indicator	Indicators that CFL collects and monitors (Assitant Director responsibility)	Indicators that CFL Mgt Team monitor quarterly
NI 152	NI 152 Working age people on out of work benefits PSA 8	LAA		
NI 153	NI 153 Working age people claiming out of work benefits in the worst performing neighbourhoods DWP DSO			
NI 154	NI 154 Net additional homes provided PSA 20	LAA		
NI 155	NI 155 Number of affordable homes delivered (gross) PSA 20			
NI 156	NI 156 Number of households living in Temporary Accommodation PSA 20			
NI 157	NI 157 Processing of planning applications as measured against targets for 'major', 'minor' and 'other' application types CLG DSO			
NI 158	NI 158 % decent council homes CLG DSO			
NI 159	NI 159 Supply of ready to develop housing sites CLG DSO			
NI 160	NI 160 Local Authority tenants' satisfaction with landlord services CLG DSO			
NI 161	NI 161 Learners achieving a Level 1 qualification in literacy PSA 2			
NI 162	NI 162 Learners achieving an Entry Level 3 qualification in numeracy PSA 2			
NI 163	NI 163 Working age population qualified to at least Level 2 or higher PSA 2	LAA		
NI 164	NI 164 Working age population qualified to at least Level 3 or higher PSA 2			
NI 165	NI 165 Working age population qualified to at least Level 4 or higher PSA 2	LAA		
NI 166	NI 166 Average earnings of employees in the area BERR DSO			
NI 167	NI 167 Congestion – average journey time per mile during the morning peak DfT DSO PSA 5			
NI 168	NI 168 Principal roads where maintenance should be considered DfT DSO			
NI 169	NI 169 Non-principal roads where maintenance should be considered DfT DSO			
NI 170	NI 170 Previously developed land that has been vacant or derelict for more than 5 years CLG DSO 3			
NI 171	NI 171 VAT registration rate BERR DSO	LAA Local Indicator		
NI 172	NI 172 VAT registered businesses in the area showing growth BERR DSO	LAA		
NI 173	NI 173 People falling out of work and on to incapacity benefits DWP DSO			
NI 174	NI 174 Skills gaps in the current workforce reported by employers DIUS DSO			
NI 175	NI 175 Access to services and facilities by public transport, walking and cycling DfT DSO	LAA Local Indicator		
NI 176	NI 176 Working age people with access to employment by public transport (and other specified modes) DfT DSO			
NI 177	NI 177 Local bus passenger journeys originating in the authority area DfT DSO			
NI 178	NI 178 Bus services running on time DfT DSO			
NI 179	NI 179 Value for money – total net value of on-going cash-releasing value for money gains that have impacted since the start of the 2008-9 financial year CLG DSO			
NI 180	NI 180 Changes in Housing Benefit/ Council Tax Benefit entitlements within the year DWP DSO			
NI 181	NI 181 Time taken to process Housing Benefit/Council Tax Benefit new claims and change events DWP DSO			
NI 182	NI 182 Satisfaction of businesses with local authority regulation services BERR DSO			
NI 183	NI 183 Impact of local authority regulatory services on the fair trading environment BERR DSO			
NI 184	NI 184 Food establishments in the area which are broadly compliant with food hygiene law			

National Indicator Ref	Description	Local Area Agreement Indicator	Indicators that CFL collects and monitors (Assitant Director responsibility)	Indicators that CFL Mgt Team monitor quarterly
NI 185	NI 185 CO2 reduction from Local Authority operations PSA 27			
NI 186	NI 186 Per capita CO2 emissions in the LA area PSA 27	LAA		
NI 187	NI 187 Tackling fuel poverty - people receiving income based benefits living in homes with a low			
NI 188	NI 188 Adapting to climate change PSA 27			
NI 189	NI 189 Flood and coastal erosion risk management Defra DSO			
NI 190	NI 190 Achievement in meeting standards for the control system for animal health Defra DSO			
NI 191	NI 191 Residual household waste per head Defra DSO			
NI 192	NI 192 Household waste recycled and composted Defra DSO			
NI 193	NI 193 Municipal waste land filled Defra DSO]	LAA		
NI 194	NI 194 Level of air quality - reduction in NOx and primary PM10 emissions through local authority's			
NI 195	NI 195 Improved street and environmental cleanliness (levels of graffiti, litter, detritus and fly posting) Defra DSO			
NI 196	NI 196 Improved street and environmental cleanliness - fly tipping Defra DSO			
NI 197	NI 197 Improved local biodiversity – active management of local sites Defra DSO	LAA Local Indicator		
NI 198	NI 198 Children travelling to school - mode of travel usually used DfT DSO	LAA	Sylvia Gibson	
NI 199	NI 199: Children and young people's satisfaction with parks and play areas		Roy Waterfield	

This page is intentionally left blank

<b>Appendix B</b>	
<b>Indicators from Directorate Plan and the Local Area Agreement – monitored quarterly by CFL Management Team with commentary where data is not available</b>	
<p><b>Basket of critical indicators</b></p> <p><b>Priority or challenge identified in Directorate Plan</b></p> <p>Reduce the health inequalities of children and families in Central Bedfordshire</p>	<p>NI 51- Effectiveness of child and adolescent mental health (LAA)            NI 56 - Obesity among primary age school children (LAA)            NI 58 – Emotional and behavioural health of looked after children            NI 115 – Substance misuse by young people (LAA)            NI 116 – Proportion of children in poverty (Local LAA)</p>
<p>Embed and ensure a multi-agency approach to safeguarding practices across Central Bedfordshire</p>	<p>NI59 – Initial assessments for children’s social care carried out within 7 working days of referral            NI 60 – Core assessments for children’s social care that were carried out within 35 working days of their commencement            NI 62 – Stability of placements of looked after children (number of moves)            NI63 – Stability of placements of looked after children (length of placement)            NI64- Child protection plans lasting 2 years or more            NI 65 Children becoming the subject of a Child Protection Plan for a second or subsequent time            NI 66 Looked after children cases which were reviewed within required timescales            NI 67 Child protection cases which were reviewed within required timescales            NI 68 – Referrals to children’s social care going on to initial assessment            NI 147 – Care leavers in suitable accommodation            NI 148 – Care leavers in education, employment or training</p>
<p>Develop integrated, locality service planning, decision making and service delivery</p>	<p>This is a cross cutting priority and improved outcomes will be seen in a range of indicators.</p>
<p>Raise Educational Achievement and improve children’s assessment outcomes and examination results at age 11 and 16 (statutory indicators LAA).</p>	<p>NI 73 - Achievement at level 4 or above in both English and Maths at Key Stage 2 (Threshold)            NI 75 - Achievement of 5 or more A*-C grades at GCSE or equivalent including English and Maths (Threshold)            NI 87 - Secondary school persistent absence rate            NI 88 - Percentage of schools providing access to extended services            NI 99 - Children in care reaching level 4 in English at Key Stage 2            NI 100 - Children in care reaching level 4 in Maths at Key Stage 2            NI 101 - Children in care achieving 5 A*-C GCSEs (or equivalent) at Key Stage 4 (including English and Maths) 2 and 4            NI 103 Special Educational Needs - statements issued within 26 weeks            NI114 - Rate of permanent exclusions from school            NI 89 - Reduction of number of schools judged as requiring special measures and improvement in time taken to come out of the category</p>

<b>Basket of critical indicators</b>	<b>Appendix B</b>
<b>Priority or challenge identified in Directorate Plan</b>	<b>Indicators from Directorate Plan and the Local Area Agreement – monitored quarterly by CFL Management Team with commentary where data is not available</b>
Increase young people's participation in positive activities	NI 110 - Young People's Participation in positive activities (LAA)
Increase the number of young people in employment education or training	NI 117- 16-18 year olds who are not in education, employment or training (LAA)
Reduce the number of First Time Entrants and the Proven Rate of Reoffending.	NI 19 Rate of proven re-offending by young offenders NI 111 First time entrants to the Youth Justice System aged 10 – 17
Deliver services that represent value for money and drive efficiencies	NI 8 Adult participation in sport (LAA) NI 11 Engagement in the arts (Local LAA) NI 57 Children and young people's participation in high-quality PE and sport

Priority - Reduce the health inequalities of children and families in Central Bedfordshire															
Indicator Reference	Title	Polarity	AD	Outturn				Target 09/10	Year to date 01 April - 30 June	Year Direction of Travel	RAG	Last Month 31-May	Month to date 30-June	Month Direction of Travel	RAG
				National 07/08	Group 07/08	BCC 07/08	CBC 08/09								
NI 51	Councils' self assessment of progress on four elements of the implementation of the Child and Adolescent Mental Health Service (CAMHS) framework - LAA	H	MP	14	13	13	13 BCC	14	Not yet available	Not yet available	NA	Reported Quarterly			
<b>Commentary on NI 51:</b>		This indicator relies on a Self assessment due to be submitted in September to the DCSF, there will therefore be a detailed response in the next quarterly report.													
Indicator Reference	Title	Polarity	AD	Outturn (Academic Year)				Target 08/09	Year to date 01 Sep - 30 June	Year Direction of Travel	RAG	Last Month 31-May	Month to date 30-June	Month Direction of Travel	RAG
				National 06/07	Group 07/08	BCC 06/07	CBC 07/08								
NI 56	Obesity among primary school age children in Year 6 - LAA	L	MP	17.5%	15.70%	13.7%	Not yet available	13.6%	Not yet available	Not yet available	NA	Reported Quarterly			
<b>Commentary on NI 56:</b>		Children are defined as obese if their body-mass index (BMI) is above the 95th centile of the reference curve for their age and sex according to the UK BMI centile classification. The BMI is calculated using a child's height, weight, date of birth and sex. The National Child measurement programme is completed at the end of each academic year. School nurses have carried out the fieldwork, analysis was not available at time of writing. Results for 07/08 have not yet been published.													
Indicator Reference	Title	Polarity	AD	Outturn (Academic Year)				Target 08/09	Year to date 01 Sep - 30 June	Year Direction of Travel	RAG	Last Month 31-May	Month to date 30-June	Month Direction of Travel	RAG
				National 08/09	Group 08/09	BCC 06/07	CBC 07/08								
NI 115	Substance misuse by young people PSA - LAA Source: Tellus3 Survey	L	GD	10.9%	11.5%	New	New	NT	13.3%	New	NT	Reported Quarterly			
<b>Commentary on NI 115:</b>		The data for this indicator is available on an annual basis. In 08/09, a baseline against the indicator was developed for Central Bedfordshire and set at 13.3%. This places Central Bedfordshire above our family group average of 11.5% although it has been acknowledged that the sample of data used in Bedfordshire was not large enough to offer a full accurate picture across the locality. For 09/10, our Harmful Risky Behaviours Plan and Performance Framework are in place. These documents outline what action we will take to address problematic drugs/alcohol issues in Central Bedfordshire and provide a range of local & national indicators that will highlight our progress. Regular reports will be made against key indicators to the Be Healthy group. A full report on Q1 performance will be available in the next commentary when data becomes available.													
Indicator Reference	Title	Polarity	AD	Outturn				Target 09/10	Year to date 01 April - 30 June	Year Direction of Travel	RAG	Last Month 31-May	Month to date 30-June	Month Direction of Travel	RAG
				National 07/08	Group 07/08	BCC 07/08	CBC 08/09								
NI 116	Proportion of children in poverty - LAA	L	GD	New	New	New	New	NT	Not yet available	Not yet available	NT	Reported Quarterly			
<b>Commentary on NI 116:</b>		Still awaiting national guidance concerning the baseline: However, Central Bedfordshire is well placed to understand the local characteristics of poverty as measured through workless and low income households data, due to the work of the Bedfordshire Child Poverty Network. Currently there are 27% of children aged 1 to 16 living within such families. A new Child Poverty Bill was published one month ago and includes 4 new national indicators. A Child Poverty Strategy will be completed by December 09, in collaboration with the Local Strategic Partnership. Progress and monitoring of performance will be overseen by the Achieving Economic Well Being Delivery Group. The reduction of Child Poverty is a major priority contained within the new Children & Young Peoples Plan.													

Indicator Reference	Title	Polarity	AD	Outturn				Target 09/10	Year to date 01 April - 30 June	Year Direction of Travel	RAG	Last Month 31-May	Month to date 30-June	Month Direction of Travel	RAG
				National 07/08	Group 07/08	BCC 07/08	CBC 08/09								
NI 58	Emotional and behavioural health of children in care Source: SSDA 903	H	MP	New	New	New	12.5	NT	5.0	↑	NT	5.0	5.0	●	NT
<b>Commentary on NI 58:</b>		Looked after children experience significantly worse mental health than the general child population. An estimated 45% of looked after children aged 5 to 17 have mental health problems, over 4 times higher than for all children. This measure is intended to assess progress in improving the emotional and behavioural health of looked after children. Locally the majority of last year's Strengths & Difficulties Questionnaires (SDQs) were completed in the last quarter of the performance year (Jan-Mar). As these are annual questionnaires the current performance profile is therefore to be expected. Last year was the first for reporting against this indicator, comparative analysis is not therefore available as baselines are being established													
<b>2.7% so far completed (01/04 - 30/06)</b>															
<b>Priority - Embed and ensure a multi-agency approach to safeguarding practices across Central Bedfordshire</b>															
Indicator Reference	Title	Polarity	AD	Outturn				Target 09/10	Year to date 01 April - 30 June	Year Direction of Travel	RAG	Last Month 31-May	Month to date 30-June	Month Direction of Travel	RAG
NI 68	The percentage of referrals of children in need that led to initial assessments (Count of referrals divided by Initial Assessment Completed)	H	MP	59.4%	50.8%	71.0%	83.3%	80.0%	75.7%	↓	Amber	93.8%	61.2%	↓	Amber
<b>Commentary on NI 68:</b>		This indicator is a proxy for several issues: the appropriateness of referrals coming into social care, which can show whether local agencies are working well together; and the thresholds which are being applied in children's social care at a local level. This quarter's performance is in line with both the national and comparator authorities group. It does however indicate an increase in local contact patterns due in part to heightened sensitivity of professionals following the death of baby Peter and the subsequent focus on safeguarding.													
Indicator Reference	Title	Polarity	AD	Outturn				Target 09/10	Year to date 01 April - 30 June	Year Direction of Travel	RAG	Last Month 31-May	Month to date 30-June	Month Direction of Travel	RAG
NI 59	The percentage of initial assessments within seven working days of referral	H	MP	70.7%	67.1%	88.1%	92.6%	85.0%	82.3%	↓	Amber	81.3%	85.2%	↑	Green
<b>Commentary on NI 59:</b>		Initial assessments are an important indicator of how quickly services can respond when a child is thought to be at risk of serious harm. As the assessments involve a range of local agencies, this indicator also shows how well multi-agency working arrangements are established in local authority areas. Reported performance is in line with the target and is significantly better than the annual average performance both nationally and for comparator Authorities.													
Indicator Reference	Title	Polarity	AD	Outturn				Target 09/10	Year to date 01 April - 30 June	Year Direction of Travel	RAG	Last Month 31-May	Month to date 30-June	Month Direction of Travel	RAG
NI 60	The percentage of core assessments that were completed within 35 working days of their commencement	H	MP	80.0%	80.3%	80.7%	89.9%	85.0%	72.0%	↓	Amber	83.3%	67.6%	↓	Amber
<b>Commentary on NI 60:</b>		This indicator measures the percentage of core assessments which were completed within 35 working days. Core assessments are in-depth assessments of a child, or children, and their family, as defined in the Framework for the Assessment of Children in Need and their Families. The temporary dip in performance against this indicator has been caused by staffing difficulties in the Intake & Assessment Team and some ICT issues. Recruitment activity is taking place to reduce reliance on agency staff. The impact of maternity leave and staff released for qualification training is being reviewed and the Team Manager is taking local action to ensure improved performance in the next quarter.													



Indicator Reference	Title	Polarity	AD	Outturn				Target 09/10	Year to date 01 April - 30 June	Year Direction of Travel	RAG	Last Month 31-May	Month to date 30-June	Month Direction of Travel	RAG
				National 07/08	Group 07/08	BCC 07/08	CBC 08/09								
NI 62	The percentage of children looked after at 31 March with three or more placements during the year	L	MP	11.0%	11.9%	10.6%	9.8%	9.0%	0.7%	↑	NR	0.0%	0.7%	Not relevant	NR
<b>Commentary on NI 62:</b>		This indicator is an important measure of the stability of care that a child has experienced. On the whole stability is associated with better outcomes – placement instability has been highlighted as a key barrier to improving educational outcomes for example. Proper assessment of a child’s needs and an adequate choice of placements to meet the varied needs of different children are essential if appropriate stable placements are to be made. Locally performance is good compared to both national and comparator group performance. It is in line with the target trajectory. The current rolling year performance is 9.3%.													
NI 63	The percentage of looked after children aged under 16 at 31 March who had been looked after continuously for at least 2.5 years, who were living in the same placement for at least two years, or are placed for adoption.	H	MP	66.5%	66.8%	62.6%	66.7%	65.0%	61.4%	↓	Amber	67.5%	61.4%	↓	Amber
<b>Commentary on NI 63:</b>		This indicator measures the long-term stability of children who remain in care for significant periods of time. Stability is associated with better outcomes. The reported change is a consequence of children passing the 2.5 year threshold who moved earlier in their care careers.													
NI 64	The percentage of children who ceased to be the subject of a child protection plan, during the year ending 31 March, who had been previously the subject of a child protection plan, continuously for two years	L	MP	5.3%	3.8%	4.4%	2.2%	3.5%	0.0%	↑	Green	0.0%	0.0%	●	Green
<b>Commentary on NI 64:</b>		This indicator measures whether children and their families are receiving the services necessary to bring about the required changes in the family situation and to monitor performance in working towards the outcomes outlined in the child protection plan. The data indicates very good performance to date. There are however, seven children who have child protection plans which exceed two years duration within the system. As the work with their families is completed performance against this indicator is expected to be in line with the target.													
NI 65	The percentage of children who became the subject of a child protection plan during the year, who had previously been the subject of a child protection plan	L	MP	13.6%	15.3%	15.1%	13.2%	15.0%	45.5%	↓	Red	50.0%	40.0%	↑	Red
<b>Commentary on NI 65:</b>		Low numbers are having a dramatic statistical impact on this percentage target. However, trajectory is towards target as the impact of revised risk tolerance thresholds is absorbed into the performance profile. Performance is being closely monitored but decisions about child protection planning will be based solely on effective safeguarding practice rather than on achieving the target.													

Indicator Reference	Title	Polarity	AD	Outturn				Target 09/10	Year to date 01 April - 30 June	Year Direction of Travel	RAG	Last Month 31-May	Month to date 30-June	Month Direction of Travel	RAG
				National 07/08	Group 07/08	BCC 07/08	CBC 08/09								
NI 66	The percentage of children looked-after cases which should have been reviewed during the year which were reviewed on time during the year	H	MP	90.0%	81.2%	98.4%	97.5%	95.0%	99.3%		Green	99.2%	99.3%		Green
<b>Commentary on NI 66:</b>		The review is one of the key components within the core processes of working with children and families. The purpose of the review is to consider the plan for the child's welfare, to monitor the progress of the plan and amend it as necessary in light of changed information and circumstances. Good performance is reported which is in line with target and exceeds both national and comparator group performance.													
Indicator Reference	Title	Polarity	AD	Outturn				Target 09/10	Year to date 01 April - 30 June	Year Direction of Travel	RAG	Last Month 31-May	Month to date 30-June	Month Direction of Travel	RAG
NI 67	The percentage of child protection cases which should have been reviewed during the year that were reviewed	H	MP	99.4%	99.6%	100.0%	100.0%	100.0%	100.0%		Green	100.0%	100.0%		Green
<b>Commentary on NI 67:</b>		Reviews are a key element in delivering Child Protection Plans and effective reviews should ensure the provision of good quality interventions. This indicator is a proxy for the measurement of the effectiveness of the interventions provided to children with a Child Protection Plan. Very good performance is reported in line with the target.													
Indicator Reference	Title	Polarity	AD	Outturn				Target 09/10	Year to date 01 April - 30 June	Year Direction of Travel	RAG	Last Month 31-May	Month to date 30-June	Month Direction of Travel	RAG
NI 147	The percentage of care leavers at age 19 who are living in suitable accommodation	H	MP	88.4%	89.9%	71.0%	100.0%	95.0%	Not yet available	Not yet available	NA	Not yet available	Not yet available	Not yet available	NA
<b>Commentary on NI 147:</b>		No activity to report as no young people have passed the reporting threshold.													
Indicator Reference	Title	Polarity	AD	Outturn				Target 09/10	Year to date 01 April - 30 June	Year Direction of Travel	RAG	Last Month 31-May	Month to date 30-June	Month Direction of Travel	RAG
NI 148	The percentage of care leavers at age 19 who are engaged in education, training or employment	H	MP	64.9%	68.0%	56.0%	66.7%	70.0%	Not yet available	Not yet available	NA	Not yet available	Not yet available	Not yet available	NA
<b>Commentary on NI 148:</b>		No activity to report as no young people have passed the reporting threshold.													

Priority - Raise educational achievement and improve children's assessment outcomes and examination results at age 11 and 16															
Indicator Reference	Title	Polarity	AD	Outturn (Academic Year)				Target 08/09	Year to date 01 Sep - 30 June	Year Direction of Travel	RAG	Last Month 31-May	Month to date 30-June	Month Direction of Travel	RAG
				National 07/08	Group 07/08	06/07	07/08								
NI 89a	Reduction of number of schools judged as requiring special measures	L	PS	Not relevant	Not relevant	1	1	0	0	↑	Green	Reported Quarterly			
<b>Commentary on NI 89a:</b>		Currently there are no schools in Special Measures or with a Notice to Improve in Central Bedfordshire. Central Bedfordshire has a School Intervention Strategy and two schools have been evaluated using this strategy as being of the highest concern - red schools. Both schools are making good progress in their improvement plans and Key Stage 2 results have improved. In one school the proportion of pupils attaining Level 4 and above in English and mathematics has improved from 48 to 68 per cent; in English from 53 to 71 per cent; in mathematics from 62 to 84 per cent. In the second school the proportion of pupils attaining Level 4 and above in English and mathematics has improved from 67 to 73 per cent; in English from 73 to 76 per cent; in mathematics from 80 to 84 per cent. The School Intervention Strategy now has an increased focus on support for schools which have received satisfactory Ofsted inspections to enable improvement towards good outcomes.													
Indicator Reference	Title	Polarity	AD	Outturn (Academic Year)				Target 08/09	Year to date 01 Sep - 30 June	Year Direction of Travel	RAG	Last Month 31-May	Month to date 30-June	Month Direction of Travel	RAG
NI 89b	Improvement of time taken to come out of special measures	L	PS	Not yet available	Not yet available	Not relevant	Not relevant	NT	23	Not relevant	NT	Reported Quarterly			
<b>Commentary on NI 89b:</b>		The last Central Bedfordshire school in Special Measures was Northfields Technology College. This school received a satisfactory inspection after 23 months which was well within the timescale recommended by Her Majesty's Inspectors.													
Indicator Reference	Title	Polarity	AD	Outturn (Academic Year)				Target 08/09	Year to date 01 Sep - 30 June	Year Direction of Travel	RAG	Last Month 31-May	Month to date 30-June	Month Direction of Travel	RAG
NI 73	Achievement at level 4 or above in both English and Maths at Key Stage 2 (Threshold) PSA	H	PS	73%	75%	71%	75%	NT	Not yet available	Not yet available	NT	Reported Quarterly			
<b>Commentary on NI 73:</b>		This is a new indicator from 2009. Provisional results indicate that 72% of pupils at Key Stage 2 achieved Level 4 or above in both English and mathematics combined. This provisional result does not take account of marking reviews lodged with the external marking agency. At this stage this is a decline compared with 2007-8 of 3%. However, neither the national outcomes nor those for statistical neighbours are yet available for comparison.													
Indicator Reference	Title	Polarity	AD	Outturn (Academic Year)				Target 08/09	Year to date 01 Sep - 30 June	Year Direction of Travel	RAG	Last Month 31-May	Month to date 30-June	Month Direction of Travel	RAG
NI 75	Percentage achieving 5+ A*-C, including English & Maths (all pupils)	H	PS	47.6%	52.7%	48.6%	51.0%	NT	Not yet available	Not yet available	NT	Reported Quarterly			
<b>Commentary on NI 75:</b>		Provisional GCSE results will be known in late August. Last year's figure of 51% represented a substantial improvement on the previous year's results. Predictions from upper schools for 2008-9 indicate that the target of 55% could be achieved. If predictions are realised it would place Central Bedfordshire above the average for statistical neighbours in 2008 of 52.7 per cent and well above the national average for 2008 of 47.6 per cent. Four upper schools will be part of the Gaining Ground programme in the new school year.													

Indicator Reference	Title	Polarity	AD	Outturn (Academic Year)				Target 08/09	Year to date 01 Sep - 30 June	Year Direction of Travel	RAG	Last Month 31-May	Month to date 30-June	Month Direction of Travel	RAG
				National 07/08	Group 07/08	06/07	07/08								
NI 87	Secondary school persistent absence rate	L	GD	5.6%	4.8%	3.7%	3.4%	NT	Not yet available	Not yet available	NT	Reported Quarterly			
<b>Commentary on NI 87:</b>		Whilst persistent absence at CBC schools remains low compared to Ofsted neighbour authorities it should be remembered that for the purposes of NI 87 middle schools count as secondary schools and this may well artificially deflate the actual CBC persistent absence figure. There is a need for further comparative analysis. Targeting of designated persistent absence schools will continue. (Next year's NI 87 will be calculated excluding the persistent absence figures from the newly-established All Saints Academy and this is likely to further deflate the overall figure.)													
Indicator Reference	Title	Polarity	AD	Outturn (Academic Year)				Target 08/09	Year to date 01 Sep - 30 June	Year Direction of Travel	RAG	Last Month 31-May	Month to date 30-June	Month Direction of Travel	RAG
NI 88	Number of Extended Schools	H	GD	Not yet available	Not yet available	Not yet available	Not yet available	NT	56%	↑	NT	Reported Quarterly			
<b>Commentary on NI 88:</b>		We have made excellent progress and are fully expecting to meet the 85% target of schools offering the Full Core Offer by September 09. Comparative data in relation to regional averages and statistical neighbours will be available from October 09.													
Indicator Reference	Title	Polarity	AD	Outturn (Academic Year)				Target 08/09	Year to date 01 Sep - 30 June	Year Direction of Travel	RAG	Last Month 31-May	Month to date 30-June	Month Direction of Travel	RAG
NI 99	Children in care reaching level 4 in English at Key Stage 2 PSA	H	PS	46.0%	37.0%	40.9% BCC	50.0%	NT	Not yet available	Not yet available	NT	Reported Quarterly			
<b>Commentary on NI 99:</b>		Central Bedfordshire data for 2007-8 shows results above the national. 2008-9 outcomes are not yet available and these will be for small numbers of children. Improved processes to track the progress made by individual children in this group are being implemented and will be overseen by the work of the Virtual Head teacher													
Indicator Reference	Title	Polarity	AD	Outturn (Academic Year)				Target 08/09	Year to date 01 Sep - 30 June	Year Direction of Travel	RAG	Last Month 31-May	Month to date 30-June	Month Direction of Travel	RAG
NI 100	Children in care reaching level 4 in Maths at Key Stage 2 PSA	H	PS	44.0%	38.0%	40.9% BCC	50.0%	NT	Not yet available	Not yet available	NT	Reported Quarterly			
<b>Commentary on NI 100:</b>		As above													
Indicator Reference	Title	Polarity	AD	Outturn (Academic Year)				Target 08/09	Year to date 01 Sep - 30 June	Year Direction of Travel	RAG	Last Month 31-May	Month to date 30-June	Month Direction of Travel	RAG
NI 101	Children in care achieving 5 A-C GCSEs (or equiv.) at Key Stage 4 (including English and Maths) PSA	H	PS	Not reported	Not reported	14.8% BCC	12.5%	NT	Not yet available	Not yet available	NT	Reported Quarterly			
<b>Commentary on NI 101:</b>		Data for 2008-9 is not yet available. A key priority within the Enjoy and Achieve section of the Children and Young People's Plan is to continue to provide support to children in vulnerable circumstances and to ensure that their progress is carefully monitored and support reviewed on a regular basis.													

Indicator Reference	Title	Polarity	AD	Outturn				Target 09/10	Year to date 01 April - 30 June	Year Direction of Travel	RAG	Last Month 31-May	Month to date 30-June	Month Direction of Travel	RAG
				National 07/08	Group 07/08	BCC 07/08	CBC 08/09								
NI 103a	The percentage of new statements of special educational needs (SEN) prepared within 26 weeks (EXCLUDING exceptions)	H	MP	New	New	New	100.0%	95.0%	100.00%		Green	Reported Quarterly			
<b>Commentary on NI 103a:</b>		Good performance in line with target.													
Indicator Reference	Title	Polarity	AD	Outturn				Target 09/10	Year to date 01 April - 30 June	Year Direction of Travel	RAG	Last Month 31-May	Month to date 30-June	Month Direction of Travel	RAG
NI 103b	The percentage of new statements of special educational needs (SEN) prepared within 26 weeks (INCLUDING exceptions)	H	MP	New	New	New	83.9%	77.0%	95.70%		Green	Reported Quarterly			
<b>Commentary on NI 103b:</b>		"Exceptions" within the descriptor for this target equate to delays beyond the control of the LA. In this case the delays are in receiving reports from Paediatricians. These matters are being pursued with the relevant Trust													
Indicator Reference	Title	Polarity	AD	Outturn (Academic Year)				Target 08/09	Year to date 01 Sep - 30 June	Year Direction of Travel	RAG	Last Month 31-May	Month to date 30-June	Month Direction of Travel	RAG
NI 114	Rate of permanent exclusions from school	L	PS	0.12% AY 2006/07	Not yet available	New	0.17%	NT	0.19%		NT	0.17%	0.34%		NT
<b>Commentary on NI 114:</b>		There were 69 permanent exclusions up to the end of June 2009. This compares to 68 at the same point last year. Individual schools with high rates of exclusion are being targeted for improvement. A priority within the Enjoy and Achieve plan is to provide support within communities to improve inclusion and to work with schools to use processes that lead to effective identification of, and early intervention with, children at risk of exclusion.													
<b>Priority - Increase young people's participation in positive activities</b>															
Indicator Reference	Title	Polarity	AD	Outturn (Academic Year)				Target 08/09	Year to date 01 Sep - 30 June	Year Direction of Travel	RAG	Last Month 31-May	Month to date 30-June	Month Direction of Travel	RAG
NI 110	Young people's participation in positive activities PSA Source: The TellUs survey	H	GD	69.5%	73.7%	New	New	NT	73.9%	New	NT	Reported Quarterly			
<b>Commentary on NI 110:</b>		The data from the yearly TellUs Survey is quite small and will not offer a full and accurate picture across the locality. Under the Making a Positive Contribution delivery group, plans are in place to collect actual activity in a coordinated manner. Priorities included within the Children & Young People's Plan cover increasing the range of Youth Work provision on Friday & Saturday evenings and the creation of a new Youth Cabinet. New local Targets are near to completion.													

Priority - Increase the number of young people in employment, education or training															
Indicator Reference	Title	Polarity	AD	Outturn				Target 09/10	Year to date 01 April - 30 June	Year Direction of Travel	RAG	Last Month 31-May	Month to date 30-June	Month Direction of Travel	RAG
				National 07/08	Group 07/08	BCC 07/08	CBC 08/09								
NI 117	Connexions partnership data: Number and proportion of 16 to 18 year olds not in education, employment or training (NEET). Note: Outturn figure relates to age group 16- <19	L	GD	6.7%	6.2% BCC	6.7%	5.9% BCC	NT	Not yet available	Not yet available	NT	Reported Quarterly			
<b>Commentary on NI 117:</b>		Data is returned to the Department for Children Schools and Families on a monthly basis and scrutinized by the 14-19 strategic forum and the Achieve Economic Wellbeing delivery group. Last year the Connexions Service exceeded the 6.1% target and attracted reward money for Central Bedfordshire. Benchmarking for Central Bedfordshire in relation to overall performance will be measured during Nov 09-January 10. Statistical data for April showed that 6% of 16-18 year olds were not in Education Training or Employment which was 6% better than the regional average. The % in Learning stood at 78.8% slightly above the regional average of 78.6%. In June a total of 336 young people were not in Education Training or Employment, (6.5% the same outturn at the same period last year). National and regional data will be available within two months and it is expected that the economic climate will impact on this target within all Local Authorities. Locally we are using sophisticated management information to better target hot spot areas and individual young people, and have reorganised service delivery to good effect.													
Priority - Reduce the number of First Time Entrants and the Proven Rate of Reoffending															
Indicator Reference	Title	Polarity	AD	Outturn				Target 09/10	Year to date 01 April - 30 June	Year Direction of Travel	RAG	Last Month 31-May	Month to date 30-June	Month Direction of Travel	RAG
				National 07/08	Group 07/08	BCC 07/08	CBC 08/09								
NI 19	Re-offending Performance	H	GD	56.6%	58.9%	76.7%	Not yet available	NT	Not yet available	Not yet available	NT	Reported Quarterly			
<b>Commentary on NI 19:</b>		Data for Central Bedfordshire will be available within one month. This is a shared service hosted by Bedford Borough and performance is monitored through the statutory Chief Officers' Group. Re-offending is measured against a 2005 cohort as a baseline, and the rate of re-offending was considerably better than national, regional and family averages. The use of officers employed to work with high risk young offenders and the development of restorative justice interventions within hostels and Looked after Children Homes have been particularly successful in reducing re-offending. The Bedfordshire Youth Offending Service was rated excellent in January 2009.													
Indicator Reference	Title	Polarity	AD	Outturn				Target 09/10	Year to date 01 April - 30 June	Year Direction of Travel	RAG	Last Month 31-May	Month to date 30-June	Month Direction of Travel	RAG
				National 08/09	Group 08/09	BCC 07/08	BCC 08/09								
NI 111	The number of first timers in the youth justice system Actual National Indicator is expressed as a number	L	GD	-18.7%	-23.6%	-28.5%	-15.6%	NT	Not yet available	Not yet available	NT	Reported Quarterly			
<b>Commentary on NI 111:</b>		During 07/08 - 08/09, 930 young people entered the criminal justice system for the very first time due to being charged with or admitting to committing a criminal offence. This equates to a reduction of 800 young people since 2005/6 and is the lowest rate of First Time Entrants per 100,000 of the population amongst our family group of statistical neighbours. The % decrease from 07/08 - 08/09 is lower than statistical neighbours and national averages due to the considerable reduction in the previous years. The Youth Justice Board has confirmed that the service is well placed to meet the target this year, noting evidence of good partnership work between the Youth Offending Service, Police, Youth Service and Connexions. Also, restorative justice work and the parenting service have been effective in preventing First Time Entrants. Provisional Central Bedfordshire data is available for the period April-June 09, and again shows a very positive direction of travel. This will be verified by the Youth Justice Board by the end of August 09.													

Priority - Deliver services that represent value for money and drive efficiencies															
Indicator Reference	Title	Polarity	AD	Outturn				Target 09/10	Year to date 01 April - 30 June	Year Direction of Travel	RAG	Last Month 31-May	Month to date 30-June	Month Direction of Travel	RAG
				National 07/08	Group 07/08	BCC 07/08	CBC 08/09								
NI 8	Adult participation in sport and active recreation	H	RW	Not yet available	Not yet available	22.1%	25.6%	27.2%	Not yet available	Not yet available	NA	Reported Quarterly			
<b>Commentary on NI 8:</b>		The performance in 2008/09 is a 3.5% increase on 2007/08 baseline and places CBC in the top quartile. Indicator is delivered through a multi agency arrangement - the lead being the county sports partnership - Team Beds and Luton. This is the delivery arm of Sport England's strategy. As part of the LAA it falls within the Stronger Communities thematic partnership and outputs are reported to that body on a quarterly basis. This will also be reported to the LSP. A full 3-year delivery plan provides the detail of the activity undertaken.													
Indicator Reference	Title	Polarity	AD	Outturn				Target 10/11	Year to date 01 April - 30 June	Year Direction of Travel	RAG	Last Month 31-May	Month to date 30-June	Month Direction of Travel	RAG
				National 07/08	Group 07/08	BCC 07/08	CBC 08/09								
NI 11	Engagement in the Arts	H	RW	Not yet available	Not yet available	41.8%	Not yet available	47.8%	Not yet available	Not yet available	NA	Reported Quarterly			
<b>Commentary on NI 11:</b>		The 2007/08 baseline for Bedfordshire was 41.8% and a 4% increase was targeted for 2010/11. In light of the recent Active People survey results, the targets for this indicator have been changed and are now higher than originally agreed. The year end target for 2010/11 is now 47.8%. Indicator is delivered through a multi agency arrangement - the lead being Central Bedfordshire LA. As a local indicator in the LAA it falls within the Stronger Communities thematic partnership and outputs are reported to that body on a quarterly basis. This will also be reported to the LSP. A Central Bedfordshire delivery plan provides the detail of the activity undertaken.													
Indicator Reference	Title	Polarity	AD	Outturn (Academic Year)				Target 08/09	Year to date 01 Sep - 30 June	Year Direction of Travel	RAG	Last Month 31-May	Month to date 30-June	Month Direction of Travel	RAG
				National 07/08	Group 07/08	06/07	07/08								
NI 57	Children and young people's participation in high-quality PE and sport Source: Independent Survey	H	PS	78.0%	78.0%	82.8%	85.3%	NT	Not yet available	Not yet available	NT	Reported Quarterly			
<b>Commentary on NI 57:</b>		We are awaiting the results from the DCSF of the recent survey completed by schools about participation in high quality P.E. and Sport. This is due to be published in October 2009. Early indications from the four Central Bedfordshire Schools' Partnerships show that the national target of 94% will be exceeded.													

This page is intentionally left blank



---

**Meeting:** Children, Families and Learning Overview & Scrutiny Committee

**Date:** 6 October 2009

**Subject:** Work Programme 2009-2010

**Report of:** Jon Partridge, Overview & Scrutiny Officer

**Summary:** The report provides Members with their current work programme to consider any amendments that they may wish to make.

---

Contact Officer: Jon Partridge (0300 300 4634)

Public/Exempt: Public

Wards Affected: All

Function of: n/a

**RECOMMENDATIONS:**

1. That the Children, Families and Learning Overview & Scrutiny Committee considers the current work programme and any amendments it may wish to make.
2. That the Children, Families and Learning Overview & Scrutiny Committee considers whether it wishes to establish any Task Forces to assist it in reviewing specific items on the draft work programme.
3. That the Children, Families and Learning Overview & Scrutiny Committee approves the terms of reference agreed by the Cultural Strategy Task Force (appendix B).

*Reason for Recommendation:* So as Members of the Children, Families and Learning Overview & Scrutiny Committee can keep their work programme for the municipal year 2009 – 2010 under review to ensure it is fit for purpose. Also to inform Members of the progress made in relation to the Cultural Strategy Task Force.

**Work Programme**

1. At its first meeting the Committee received a presentation providing an overview of the Sustainable Communities directorate and the key issues and challenges facing it. A work programme was subsequently drafted containing a number of priority items to allow officers to plan accordingly.

2. The work programme is regularly kept under review by the Chairman, Vice-Chairman and officers and is amended as may be appropriate, which also includes adding further items during the course of the year if Members so wish and capacity exists. This current agreed work programme is attached at **Appendix A**.

### **Task Forces**

3. Cultural Strategy

At its previous meeting the Committee resolved (**Minute CFL/09/23 refers**) to establish a Task Force to review the Cultural Strategy. This Task Force has been set up constituting Councillors Bowater, Dalgarno, Hollick, Goodchild and Mr D Landman and held its first meeting on 11 September 2009 to consider its terms of reference. The Terms of reference and scope of this project are attached for approval by the Committee at **Appendix B**.

4. Other Task Forces

At its previous meeting the Committee also resolved to set up task forces to scrutinise child poverty and the provision of facilities for youth. It is intended that the child poverty Task Force commence following the completion of either the Cultural Strategy or provision of facilities for youth Task Forces. There is currently no scheduled timescale for reviewing the provision of facilities for youth task force and Members are asked to consider, in consultation with the Director and Portfolio Holder, any appropriate timescales for the completion of this Task Force that they may wish to request.

The Child Poverty Strategy is currently listed on the Executive Forward Plan for 9 March 2010 and again the Committee may wish to consider, in consultation with the Director and Portfolio Holder, any appropriate timescales for the completion of this Task Force.

### **Executive Forward Plan**

5. The following items are currently listed on the Executive Forward Plan, which the Committee may wish to consider adding to their work programme:

#### **Lord Laming Action Plan**

This item is currently scheduled for the Executive meeting on 20 November 2009 and the Committee may wish to consider adding this item to their agenda on 3 November where an item is presently scheduled on the Local Safeguarding Children Board. This would enable Members to consider the implications of Lord Laming's action plan for Central Bedfordshire and the responsibilities of the Local Safeguarding Children Board in delivering the action plan.

### **Eligibility for Payments Policy**

This item is currently scheduled for the Executive meeting on 8 December 2009 and the Committee may wish to consider adding this item to their agenda for 1 December 2009. If agreed the Committee would receive a report outlining the policy which will set out the principles under which service users within Children's Specialist Services may be eligible for payments.

### **Conclusion**

6. The Committee is requested to consider the work programme attached and make any further amendments it considers necessary. Members are also requested to consider highlighting those items within the work programme where they wish to establish a Task Force to assist the Committee in its work.

### **CORPORATE IMPLICATIONS**

#### **Council Priorities:**

The work programme of the Children, Families and Learning Overview & Scrutiny Committee should contribute to all 5 Council priorities, and will specifically support the priority directly related to the work of the Children, Families and Learning Directorate, being educating, protecting and providing opportunities for children and young people.

The work programme of the Children, Families and Learning Overview & Scrutiny Committee should also contribute to each of the priorities agreed under the Children and Young People's Plan and the five key 'Every Child Matters' outcomes for all children and young people; 'be healthy, stay safe, enjoy and achieve, make a positive contribution and achieve economic well-being'.

#### **Financial:**

None

#### **Legal:**

None

#### **Risk Management:**

None

#### **Staffing (including Trades Unions):**

None

#### **Equalities/Human Rights:**

None

**Community Development/Safety:**

None

**Sustainability:**

None

**Appendices:**

Appendix A – Children, Families and Learning Overview and Scrutiny Committee Work Programme

Appendix B - Terms of Reference for the Cultural Strategy Task Force

**Appendix A**  
**Work Programme for Children Families & Learning Overview & Scrutiny Committee**  
**2009 - 2010**

<b>Ref</b>	<b>Indicative Overview &amp; Scrutiny Meeting Date</b>	<b>Report Title</b>	<b>Issue to be considered</b>	<b>Comment</b>
1.	11 <sup>th</sup> August 2009	Children and Young People's Plan	The CYPP sets the strategic vision and commissioning framework within which partners will, together or individually, ensure delivery of services which improve outcomes for children and young people and families in the area. Members will receive a report on the priorities and the priorities within the plan for their comments.	Recommendations were supplied to the Children's Trust Board for consideration at meeting on 3 September and subsequently the Exec on 15 September 2009. A partner response outlining changes as a result of the response was submitted to the Executive.
2.	11 <sup>th</sup> August 2009	Special Educational Needs	A report requested by the Committee at its first meeting outlining SEN provision in Central Bedfordshire.	Recommendations and comments provided to officers to be included in the consultation document prior to start of consultation with the public.
3.	11 <sup>th</sup> August 2009	Bedford Borough Council's School Organisation Review	A presentation/report requested by the Committee at its first meeting setting out the implications for Central Bedfordshire arising from Bedford Borough Council's School Organisation Review	Recommendations were not made to the Executive or officers. A further report will be submitted to the OSC at a future meeting.
4.	18th September 2009	Role of the Lead Member and DCS		<b>Meeting Cancelled</b>
5.	18 <sup>th</sup> September 2009	Performance report Q1		<b>Meeting Cancelled</b>
6.	6 <sup>th</sup> October 2009	Joint Strategic Needs Assessment	A report outlining the needs assessment for education services in Central Bedfordshire	The Committee is requested to agree to this item being included on the work programme. <i>Referral to Officers</i>

**NB: All items in gray are subject to further clarification as per comments**

Ref	Indicative Overview & Scrutiny Meeting Date	Report Title	Issue to be considered	Comment
7.	6 <sup>th</sup> October 2009	Commissioning Framework	This policy informs how the authority will undertake Strategic Commissioning and sets out the framework for strategic Commissioning.	<i>Executive: 13 October 2009</i>
8.	6 <sup>th</sup> October 2009	Performance report Q1	The quarterly performance report – to understand the performance indicators and what they mean and to review performance	<i>Referral to Officers</i>
9.	6 <sup>th</sup> October 2009	Task Force update	This will be included in the body of the work programme report and will request Members to consider approving the terms of reference as agreed by the Cultural Strategy Task Force.	<i>Referral to Officers</i>
10.	3 <sup>rd</sup> November 2009	Local Safeguarding Children Board	A presentation on the role of the Local Safeguarding Children Board and an update on the transition arrangements.  The Committee will have an understanding of the role of the Local Safeguarding Children Board in relation to the role of scrutiny.	<i>Referral to Officers</i>
11.	3 <sup>rd</sup> November 2009	Children's Workforce Development Strategy	This strategy sets out how we are going to develop the children's workforce locally to create a world-class workforce	<i>Executive: 12 January 2010</i>
12.	3 <sup>rd</sup> November 2009	Developing a Strategy for Change for CBC  <i>or - Developing an educational vision for CBC?</i>	For the Committee to receive a report proposing (1) draft principles for a Strategy for Change; and (2) processes and procedures to be undertaken in respect of the development of an educational vision and a review of school organisation. The OSC are asked to comment on the guiding principles for the strategy and the process for undertaking the review of school reorganisation and development of a vision in Central Bedfordshire.	The report provides the Committee with an opportunity to outline anything further that needs to go into this strategy prior to consideration by the Exec.  <i>Executive: 8 December 2009</i>

NB: All items in gray are subject to further clarification as per comments

Ref	Indicative Overview & Scrutiny Meeting Date	Report Title	Issue to be considered	Comment
13.	3 <sup>rd</sup> November 2009	Special Educational Needs	A further report was requested by the Committee on 11 August to receive the outcomes of consultation and proposals for future provision of services prior to a report to the Executive.	<i>Executive: 8 December 2009</i>
14.	1 <sup>st</sup> December 2009	TBC		
15.	5 <sup>th</sup> January 2010	CYPP: Enjoy and Achieve	Members to look at the outcome area within the Children and Young People's Plan and scrutinise whether the outcomes identified are being achieved and whether they are making a difference to the lives of children, young people their families and carers in Central Bedfordshire	In their democratic representation role, Members will be able to directly influence outcomes for children, young people their families and carers in Central Bedfordshire
16.	5 <sup>th</sup> January 2010	Draft Strategy for Change for CBC <i>or - Developing an educational vision for CBC?</i>	For the Committee to receive the draft strategy in light of the consultations responses prior to its agreement by the Exec.	<i>Executive: 12 January 2010</i>
17.	5 <sup>th</sup> January 2010	Corporate Parenting	Presentation to outline the responsibilities of the local authority including elected members in their role of corporate parents and highlighting the relationship between scrutiny and corporate parenting	Members will have greater clarity about their responsibilities as corporate parents and the relationship between scrutiny and corporate parenting
18.	5 <sup>th</sup> January 2010	Performance report Q2	The quarterly performance report - to review performance and comment on it	Date for receipt of report to be confirmed. <i>Referral to Officers</i>

NB: All items in gray are subject to further clarification as per comments

Ref	Indicative Overview & Scrutiny Meeting Date	Report Title	Issue to be considered	Comment
19.	2 <sup>nd</sup> February 2010	CYP: Achieve Economic Well-Being	Members to look at the outcome area within the Children and Young People's Plan and scrutinise whether the outcomes identified are being achieved and whether they are making a difference to the lives of children, young people their families and carers in Central Bedfordshire	In their democratic representation role, Members will be able to directly influence outcomes for children, young people their families and carers in Central Bedfordshire
20.	2 <sup>nd</sup> February 2010	Guidance on the role of the Lead Member and the DCS	Presentation from the DCS outlining the key statutory responsibilities of the Lead Member and Director of Children's Services as set out in the DCSF statutory guidance	Members will understand the role of the Lead Member and Director and the relationship with scrutiny
21.	2 <sup>nd</sup> March 2010	Performance report Q3	The quarterly performance report	
22.	2 <sup>nd</sup> March 2010	Children's Trust	Presentation on the role of the Children's Trust	Members will have greater understanding of the role of the Children's Trust and how scrutiny will add value
23.	30 <sup>th</sup> March 2010	CYP: Make a Positive Contribution	Members to look at the outcome area within the Children and Young People's Plan and scrutinise whether the outcomes identified are being achieved and whether they are making a difference to the lives of children, young people their families and carers in Central Bedfordshire	In their democratic representation role, Members will be able to directly influence outcomes for children, young people their families and carers in Central Bedfordshire
24.	30 <sup>th</sup> March 2010	Home to School Transport Policy	This policy sets out how the authority will respond to the Home to School Transport requirements within the Education Act 1996 and the Educational Inspections Act 2006	The Committee may wish to establish a Task Force to review this policy



Ref	Indicative Overview & Scrutiny Meeting Date	Report Title	Issue to be considered	Comment
25.	27 <sup>th</sup> April 2010	CYP: Stay Safe	Members to look at the outcome area within the Children and Young People's Plan and scrutinise whether the outcomes identified are being achieved and whether they are making a difference to the lives of children, young people their families and carers in Central Bedfordshire	In their democratic representation role, Members will be able to directly influence outcomes for children, young people their families and carers in Central Bedfordshire
26.	25 <sup>th</sup> May 2010	CYP: Be Healthy	Members to look at the outcome area within the Children and Young People's Plan and scrutinise whether the outcomes identified are being achieved and whether they are making a difference to the lives of children, young people their families and carers in Central Bedfordshire	In their democratic representation role, Members will be able to directly influence outcomes for children, young people their families and carers in Central Bedfordshire
27.	TBC	Cultural Strategy	The Cultural Strategy encapsulates the vision for cultural entitlement for all citizens in Central Bedfordshire moving to a strategic commissioning and entitlement model and recognises the cross cutting nature of cultural entitlement. The Committee has established a task force to review this item and the meeting will receive the final report and recommendations of the task force prior to consideration by the Executive.	Executive dates to be confirmed

**Task Forces Agreed by the Children, Families and Learning Overview and Scrutiny Committee**

<b>Ref</b>	<b>Report Title</b>	<b>Issues to be considered</b>	<b>Progress</b>	<b>Indicative Final report date</b>
1.	Cultural Strategy	TBC	Appointed by the Committee, first meeting took place on 11 September 2009 to consider the scope and Terms of Reference for the Task Force and these are submitted to the OSC for approval at their meeting on 29 September 2009.	TBC
2.	Youth Provision	TBC	Agreed by Committee, scoping to be completed	TBC
3.	Child Poverty Strategy	TBC	Agreed by Committee, scoping to be completed and Task Force commenced on the completion of either the Youth Provision or the Cultural Strategy Task Forces.	TBC

<b>Commissioning Body:</b>	Children, Families and Learning OSC
<b>Enquiry Title:</b>	<b>Cultural Strategy Task Force</b>
<b>Membership (including any potential Co-optees):</b>	Councillors Bowater, Goodchild, Hollick and Dalgarno and Mr Landman
<b>Portfolio Holder(s):</b>	Councillor S Male (Portfolio Holder: Culture and Skills) and Councillor P Turner (Assistant Portfolio Holder)
<b>Terms of Reference</b>	<ol style="list-style-type: none"> <li>1. To understand the Council and partners strategic approach to the delivery of cultural services in Central Bedfordshire.</li> <li>2. To scrutinise the current provision of cultural services and assess the extent to which provision is 'fit for purpose' and provides value for money.</li> <li>3. To assist in developing a vision for culture in Central Bedfordshire.</li> <li>4. To consider the extent to which a collaborative approach has been developed for the delivery of 'cultural' services</li> <li>5. To ensure that the Cultural Strategy fits with the Council's strategic objectives.</li> </ol>
<b>Links to Corporate Priorities:</b>	TBC
<b>Summary of enquiry and what may be included:</b>	
<p>The enquiry will focus on the development of a new Cultural Strategy for Central Bedfordshire, ensuring that the priorities and objectives identified are fit for purpose for the local area and that it can be appropriately delivered in partnership with local partners. Members will be invited to consider the key lines of enquiry, which might include:</p> <ul style="list-style-type: none"> <li>• What is 'culture' in Central Bedfordshire and where do we aspire to be in the future?</li> <li>• What is culture in Central Bedfordshire not?</li> <li>• A review of the cultural priorities and services currently available in Central Bedfordshire.</li> <li>• What are the key objectives and priorities for cultural services in Central Bedfordshire and what are the indicators of success for these objectives?</li> <li>• The suitability of cultural services currently available in Central Bedfordshire and how they compare to our family group of authorities.</li> <li>• The extent to which commissioning and re-commissioning of cultural services may be required in Central Bedfordshire in order to achieve priorities and the implications of this.</li> <li>• The co-ordination of sport and culture and the relationship between the two.</li> <li>• The use of schools as an extended community facility.</li> <li>• What is our collaborative approach to the delivery of cultural services in Central Bedfordshire and do we all share the same vision?</li> <li>• Monitoring performance in relation to the delivery of cultural services and ensuring the services are value for money.</li> </ul>	
<b>What are the desired outcomes (what can you achieve within the timescale)?</b>	
<ul style="list-style-type: none"> <li>• A cohesive strategy for developing cultural services in Central Bedfordshire</li> <li>• A clear and deliverable action plan for enhancing local cultural services</li> </ul>	

<b>Any potential risks to completing the review:</b>			
Potential risk includes the timescales for the completion of the project. Members will need to consider what can reasonably be achieved within the timescale to ensure that an appropriate level of value is added in a timely manner prior to consideration of the strategy by the Executive.			
<b>Potential Witnesses:</b>	<ul style="list-style-type: none"> <li>• Members of the LSP Sustainable Communities Thematic Partnership</li> <li>• Delivery Agencies</li> <li>• Representatives from other beacon authorities</li> </ul> <p>Further witnesses to be identified</p>		
<b>Any Research Required (including potential site-visits or surveys [action learning]):</b>	<ul style="list-style-type: none"> <li>- Possible surveys through local media to gather views from the public on strategic priorities.</li> <li>- Possible use of thematic partnerships to develop community based evidence.</li> </ul> <p>A workshop with partners will be arranged to provide feedback on draft strategy and to work up the action plan. Further sources to be identified, which might include evidence from other local authorities, national research etc...</p>		
<b>Meeting Frequency (and potential dates):</b>	Meetings monthly (or as necessary) commencing on 11 September 2009.		
<b>Proposed Completion date:</b>	June 2010		
<b>Proposed date to OSC:</b>	April 2010	<b>Proposed date to Exec:</b>	July 2010
<b>Proposed date to Full Council:</b>	TBC if appropriate		
<b>Publicity (of recommendations):</b>	TBC		

**Attachment 1: Potential Programme for the Task Force**

<b>Meeting 1:</b>	<b>TBC</b>
<b>Purpose:</b>	<ul style="list-style-type: none"> <li>To provide Members with background information on the subject and establish an understanding of the cultural vision for Central Bedfordshire, current levels of provision and strategic approach to delivery of services in Central Beds.</li> </ul>
<b>Attendees</b>	Cultural Strategy Officers, Portfolio Holder
<b>Outcomes:</b>	<ul style="list-style-type: none"> <li>To understand the strategic approach to the delivery of cultural services in Central Beds</li> <li>To provide initial comments on the overarching vision and strategic objectives of the strategy</li> <li>To agree the Task Force's Terms of Reference, key lines of enquiry, project plan, desired witnesses and desired outcomes.</li> </ul>

<b>Meeting 2:</b>	<b>TBC</b>
<b>Purpose:</b>	Task Force to be invited to attend a stakeholder workshop to consider issues relating to the delivery of the Cultural Strategy and its strategic objectives.
<b>Attendees</b>	As per Officer invitation.
<b>Outcomes:</b>	To understand the delivery mechanisms for the Cultural Strategy and the extent of collaborative working in relation to service delivery.

<b>By Email:</b>	<b>TBC</b>
<p>Adjustment of project scope and key lines of enquiry if necessary, following the workshop and receipt of further background information.</p> <p><i>(At this stage the Task Force may wish to consider issuing a press release or briefing to the public and/ or partners on the key issues that will be considered. This would invite evidence from a wide range of people during the evidence gathering period. Surveys or research should also be commissioned at this stage, which could include e-surveys, workshops or consultation events arranged in coordination with the culture team).</i></p>	

<b>Meetings:</b>	<b>TBC</b>
<p><b>Evidence Gathering:</b> The task force to receive evidence and question witnesses as appropriate. The task force may wish to consider agreeing set themes to be considered in each of these meetings linked to the terms of reference or the topics to be included in the enquiry. Potential meeting dates may be as follows.</p> <p><i>(The Task Force should consider any site-visits or private interviews that they may wish to carry out at this stage of the process within the evidence gathering period)</i></p>	

<b>Meeting:</b>	<b>TBC</b>
<p><b>Consideration and Option Appraisal:</b> Task Force to consider all evidence submitted against key lines of enquiry and develop draft options and recommendations arising from the investigation.</p>	

**Meeting:** TBC

**Recommendations and Reporting:** Task Force receives and agrees draft final report and recommendations prior to submission to the OSC and subsequently the Executive.

**Meeting:** TBC

Final Report Submitted to Committee Services Officer

**Meeting:** TBC

Children, Families and Learning OSC receive Cultural Strategy TF report for information purposes.

**Meetings:** TBC

Executive receives final Cultural Strategy alongside the report and final recommendations of the Cultural Strategy Task Force.

**Meetings:** TBC

OSC receives a formal response from the Executive detailing how the recommendations were taken into account at the Executive meeting and how other progress in relation to the delivery of the strategy will be monitored.